

For Research Use Only

# Anti-Human GYPC Rabbit Recombinant Antibody, PBS Only

Catalog Number: 98584-1-PBS



## Basic Information

<b>Catalog Number:</b> 98584-1-PBS	<b>GenBank Accession Number:</b> BC104246	<b>Purification Method:</b> Protein A purification
<b>Concentration:</b> 1mg, 3 mg/ml	<b>GeneID (NCBI):</b> 2995	<b>CloneNo.:</b> 251100H6
<b>Source:</b> Rabbit	<b>UNIPROT ID:</b> P04921	
<b>Isotype:</b> IgG	<b>Full Name:</b> glycophorin C (Gerbich blood group)	
<b>Immunogen Catalog Number:</b> EG4905	<b>Calculated MW:</b> 14 kDa	

## Applications

**Tested Applications:**  
FC

**Species Specificity:**  
human

## Background Information

Glycophorin-C (GYPC) is a minor sialoglycoprotein in human erythrocyte membranes. GYPC interacts with protein 4.1R (EPB41) and plays an important role in regulating the mechanical stability of red cells. GYPC acts as the receptor for the Plasmodium falciparum erythrocyte binding ligand PfEBP-2 (baebl).

## Storage

**Storage:**  
Store at -80°C.  
**The product is shipped with ice packs. Upon receipt, store it immediately at -80°C**

**Storage Buffer:**  
PBS only, pH7.3

For technical support and original validation data for this product please contact:

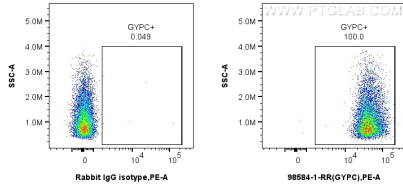
T: 4006900926

E: [Proteintech-CN@ptglab.com](mailto:Proteintech-CN@ptglab.com)

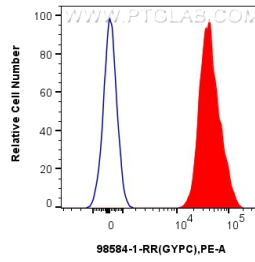
W: [ptgcn.com](http://ptgcn.com)

**This product is exclusively available under Proteintech Group brand and is not available to purchase from any other manufacturer.**

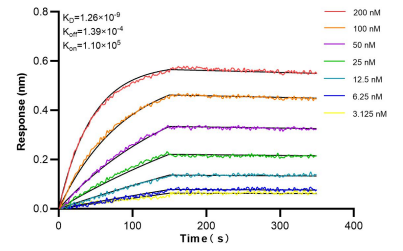
## Selected Validation Data



1x10<sup>6</sup> human peripheral blood erythrocytes were surface stained with 0.25 ug Anti-Human GYPC Rabbit RecAb (98584-1-RR, Clone: 251100H6) or 0.25 ug Rabbit IgG Isotype Control RecAb (98136-1-RR, Clone: 240953C9), and PE-Conjugated Goat Anti-Rabbit IgG(H+L). Cells were not fixed. This data was developed using the same antibody clone with 98584-1-PBS in a different storage buffer formulation.



1x10<sup>6</sup> human peripheral blood erythrocytes were surface stained with 0.25 ug Anti-Human GYPC Rabbit RecAb (98584-1-RR, Clone: 251100H6) (red) or 0.25 ug Rabbit IgG Isotype Control RecAb (98136-1-RR, Clone: 240953C9) (blue), and PE-Conjugated Goat Anti-Rabbit IgG(H+L). Cells were not fixed. This data was developed using the same antibody clone with 98584-1-PBS in a different storage buffer formulation.



Bilayer interferometry (BLI) kinetic assays of 98584-1-RR against Human GYPC were performed. The affinity constant is 1.26 nM.