

For Research Use Only

Anti-Human CD1b Rabbit Recombinant Antibody, PBS Only

Catalog Number: 98579-2-PBS



Basic Information

Catalog Number:

98579-2-PBS

Concentration:

1mg, 3 mg/ml

Source:

Rabbit

Isotype:

IgG

GenBank Accession Number:

BC069481

GeneID (NCBI):

910

UNIPROT ID:

P29016

Full Name:

CD1b molecule

Calculated MW:

333 aa, 37 kDa

Purification Method:

Protein A purification

CloneNo.:

251556D7

Applications

Tested Applications:

FC

Species Specificity:

human

Background Information

CD1b is a ~45 kDa transmembrane glycoprotein that belongs to the MHC class I-like CD1 family. It associates non-covalently with β 2-microglobulin to form a functional antigen-presenting heterodimer. CD1b is expressed on cortical thymocytes, dendritic cells (PMID: 17593659). It has the capacity to bind self and non-self lipid and glycolipid antigens and presents them to T-cell receptors on T cells (PMID: 30399491).

Storage

Storage:

Store at -80°C.

The product is shipped with ice packs. Upon receipt, store it immediately at -80°C

Storage Buffer:

PBS only, pH7.3

For technical support and original validation data for this product please contact:

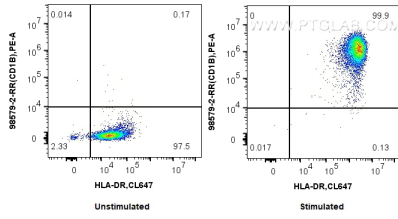
T: 4006900926

E: Proteintech-CN@ptglab.com

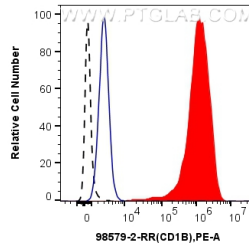
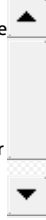
W: ptgcn.com

This product is exclusively available under Proteintech Group brand and is not available to purchase from any other manufacturer.

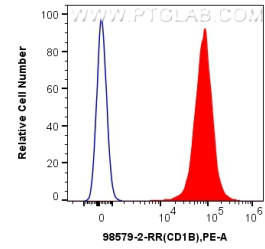
Selected Validation Data



1x10⁶ untreated monocytes or human monocyte-derived mature dendritic cells were surface stained with 0.25 ug Anti-Human CD1b Rabbit RecAb (98579-2-RR, Clone:251556D7) and PE-Conjugated Goat Anti-Rabbit IgG(H+L). Cells were then stained with CoraLite® Plus 647 Anti-Human HLA-DR (L243). Cells were incubated with FC Receptor Block prior to staining. Cells were not fixed. This data was developed using the same antibody clone with 98579-2-PBS in a



1x10⁶ human monocyte-derived mature dendritic cells were surface stained with 0.25 ug Anti-Human CD1B Rabbit RecAb (98579-2-RR, Clone: 251556D7) (red) or Rabbit IgG Isotype Control RecAb (98136-1-RR, Clone: 240953C9) (blue), and PE-Conjugated Goat Anti-Rabbit IgG(H+L). 1x10⁶ untreated human PBMCs were surface stained with 0.25 ug Anti-Human CD1B Rabbit RecAb (98579-2-RR, Clone: 251556D7) and PE-Conjugated Goat Anti-Rabbit IgG(H+L) (black, dashed). Cells



1x10⁶ MOLT-4 cells were surface stained with 0.25 ug Anti-Human CD1b Rabbit RecAb (98579-2-RR, Clone: 251556D7) (red) or 0.25 ug Rabbit IgG Isotype Control RecAb (98136-1-RR, Clone: 240953C9) (blue), and PE-Conjugated Goat Anti-Rabbit IgG(H+L). Cells were not fixed. This data was developed using the same antibody clone with 98579-2-PBS in a different storage buffer formulation.