

For Research Use Only

# Anti-Mouse IL-20RB Rabbit Recombinant Antibody

Catalog Number: 98569-3-RR



## Basic Information

Catalog Number:

98569-3-RR

Concentration:

100ug, 1000  $\mu$ g/ml

Source:

Rabbit

Isotype:

IgG

Immunogen Catalog Number:

EG3168

GenBank Accession Number:

NM\_001033543.3

GeneID (NCBI):

213208

UNIPROT ID:

E9Q9A6

Full Name:

interleukin 20 receptor beta

Calculated MW:

34 kDa

Purification Method:

Protein A purification

CloneNo.:

250596B5

Recommended Dilutions:

FC: 0.25 ug per  $10^6$  cells in a 100  $\mu$ l suspension

## Applications

Tested Applications:

FC

Species Specificity:

human, mouse

Positive Controls:

FC : Transfected HEK-293T cells,

## Background Information

Interleukin-20 receptor subunit beta (IL20RB) is a single-pass type I membrane protein of the type II cytokine receptor family. The interleukin-20-receptor I complex (IL-20-RI) is composed of two chains, IL20RA and IL20RB. IL-20-RI is a receptor for IL-19, IL-20 and IL-24. IL20RB can also form a heterodimer with IL22RA1. The IL22RA1/IL20RB dimer is a receptor for IL20 and IL24.

## Storage

Storage:

Store at 2 - 8°C. Stable for one year after shipment.

Storage Buffer:

PBS with 0.09% sodium azide, pH7.3

For technical support and original validation data for this product please contact:

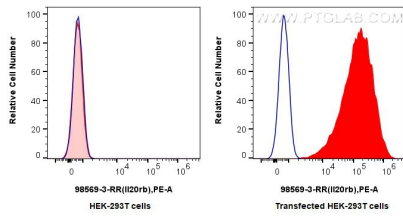
T: 4006900926

E: [Proteintech-CN@ptglab.com](mailto:Proteintech-CN@ptglab.com)

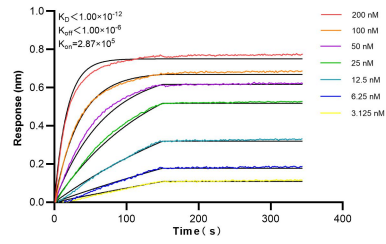
W: [ptgcn.com](http://ptgcn.com)

This product is exclusively available under Proteintech Group brand and is not available to purchase from any other manufacturer.

## Selected Validation Data



$1 \times 10^6$  HEK-293T cells (left) or IL-20RB-transfected HEK-293T cells (right) were surface stained with 0.25  $\mu$ g Anti-Mouse IL-20RB Rabbit RecAb (98569-3-RR, Clone: 250596B5)(red), or 0.25  $\mu$ g Rabbit IgG Isotype Control RecAb (98136-1-RR, Clone: 240953C9)(blue) and PE-Conjugated Goat Anti-Rabbit IgG(H+L). Cells were not fixed.



Biolayer interferometry (BLI) kinetic assays of 98569-3-RR against Mouse IL-20RB were performed. The affinity constant is below 1 pM.