

For Research Use Only

Anti-Mouse CXCL13/BCA1 Rabbit Recombinant Antibody

Catalog Number: 98562-1-RR



Basic Information

Catalog Number: 98562-1-RR	GenBank Accession Number: NM_018866	Purification Method: Protein A purification
Concentration: 100ug, 1000 µg/ml	GeneID (NCBI): 55985	CloneNo.: 250336E12
Source: Rabbit	UNIPROT ID: O55038	Recommended Dilutions: IHC: 1:500-1:2000
Isotype: IgG	Full Name: chemokine (C-X-C motif) ligand 13	FC (Intra): 0.25 ug per 10 ⁶ cells in a 100 µl suspension
Immunogen Catalog Number: EG3331	Calculated MW: 12 kDa	

Applications

Tested Applications:
IHC, FC (Intra)

Species Specificity:
mouse

Note-IHC: suggested antigen retrieval with TE buffer pH 9.0; (*) Alternatively, antigen retrieval may be performed with citrate buffer pH 6.0

Positive Controls:

IHC : mouse spleen tissue,

FC (Intra) : mouse peritoneal macrophages,

Background Information

CXCL13 (C-X-C motif chemokine 13), originally named B-lymphocyte chemoattractant (BLC) or B cell-attracting chemokine 1 (BCA-1), is a homeostatic chemokine that is constitutively secreted by stromal cells in the B-cell follicles of secondary lymphoid tissues (e.g., spleen, lymph nodes, tonsils, and Peyer's patches). It plays a crucial role in orchestrating cell migration within distinct regions of secondary lymphoid organs, strongly attracting B lymphocytes (and, to a lesser extent, T cells and macrophages) via its receptor CXCR5 (originally named Burkitt's lymphoma receptor 1, BLR1). In addition to maintaining immune cell trafficking and lymphoid follicle development, CXCL13 is implicated in inflammatory and autoimmune diseases (e.g., systemic lupus erythematosus, rheumatoid arthritis) and tumor progression (e.g., multiple myeloma).

Storage

Storage:
Store at 2 - 8°C. Stable for one year after shipment.
Storage Buffer:
PBS with 0.09% sodium azide, pH7.3

For technical support and original validation data for this product please contact:

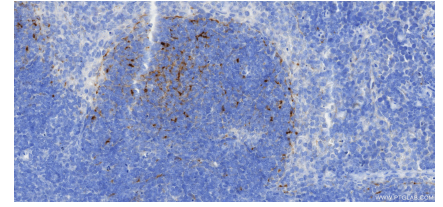
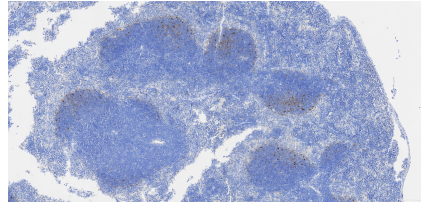
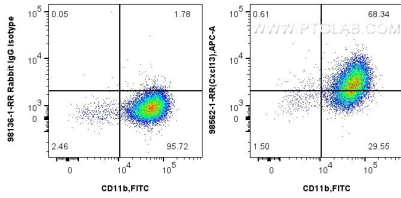
T: 4006900926

E: Proteintech-CN@ptglab.com

W: ptgcn.com

This product is exclusively available under Proteintech Group brand and is not available to purchase from any other manufacturer.

Selected Validation Data

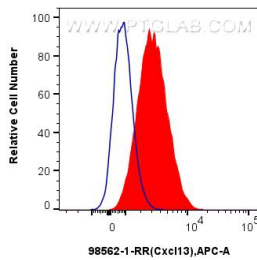


1x10⁶ mouse peritoneal macrophages were intracellularly stained with 0.25 ug Anti-Mouse CXCL13/BCA1 Rabbit RecAb (98562-1-RR, Clone: 250336E12) or 0.25 ug Rabbit IgG Isotype Control Recombinant Antibody (98136-1-RR, Clone: 240953C9), and CoraLite647-conjugated F(ab')₂ Fragment Donkey Anti-Rabbit IgG (H+L) (SA00014-7). Cells were then stained with FITC Plus Anti-Mouse CD11b. Cells were incubated with FC Receptor Block prior to staining. Cells were



Immunohistochemical analysis of paraffin-embedded mouse spleen tissue slide using 98562-1-RR (Cxl13 antibody) at dilution of 1:1000 (under 10x lens). Heat mediated antigen retrieval with Tris-EDTA buffer (pH 9.0).

Immunohistochemical analysis of paraffin-embedded mouse spleen tissue slide using 98562-1-RR (Cxl13 antibody) at dilution of 1:1000 (under 40x lens). Heat mediated antigen retrieval with Tris-EDTA buffer (pH 9.0).



1x10⁶ mouse peritoneal macrophages were intracellularly stained with 0.25 ug Anti-Mouse CXCL13/BCA1 Rabbit RecAb (98562-1-RR, Clone: 250336E12) (red) or 0.25 ug Rabbit IgG Isotype Control Recombinant Antibody (98136-1-RR, Clone: 240953C9) (blue), and CoraLite647-conjugated F(ab')₂ Fragment Donkey Anti-Rabbit IgG (H+L) (SA00014-7). Cells were incubated with FC Receptor Block prior to staining. Cells were fixed and permeabilized with Intracellular Flow

