

For Research Use Only

Anti-Human CD146/MCAM Rabbit Recombinant Antibody

Catalog Number: 98561-2-RR



Basic Information

Catalog Number: 98561-2-RR	GenBank Accession Number: NM_006500.2	Purification Method: Protein A purification
Concentration: 100ug, 1000 µg/ml	GeneID (NCBI): 4162	CloneNo.: 250530B2
Source: Rabbit	UNIPROT ID: P43121-1	Recommended Dilutions: IHC: 1:500-1:2000 FC: 0.25 ug per 10 ⁶ cells in a 100 µl suspension
Isotype: IgG	Full Name: melanoma cell adhesion molecule	
Immunogen Catalog Number: EG2938	Calculated MW: 72 kDa	

Applications

Tested Applications:
IHC, FC

Species Specificity:
human

Note-IHC: suggested antigen retrieval with TE buffer pH 9.0; (*) Alternatively, antigen retrieval may be performed with citrate buffer pH 6.0

Positive Controls:

IHC: human tonsillitis tissue,

FC: HeLa cells,

Background Information

CD146, also known as melanoma cell adhesion molecule (MCAM) or MUC18, originally identified as a biomarker of melanoma progression, is a transmembrane glycoprotein of 113-130 kDa, belonging to the immunoglobulin (Ig) superfamily (PMID: 8378324; 25993332). Structurally, it consists of five Ig domains, a transmembrane domain, and a cytoplasmic region. In normal adult tissue, CD146 is primarily expressed by vascular endothelium and smooth muscle. CD146 is a key cell adhesion protein in vascular endothelial cell activity and angiogenesis, and has been used as marker of circulating endothelium cells (CECs) (PMID: 19356677). In addition to the membrane-anchored form of CD146, a soluble form of CD146 (sCD146, 105 kDa) has also been found in human plasma and in the supernatant of cultured human endothelial cells (PMID: 9462829; 19229070; 16374253; 14597988).

Storage

Storage:
Store at 2 - 8°C. Stable for one year after shipment.
Storage Buffer:
PBS with 0.09% sodium azide, pH7.3

For technical support and original validation data for this product please contact:

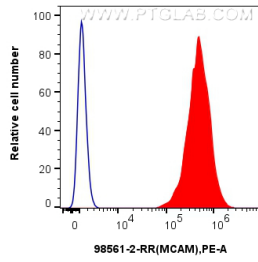
T: 4006900926

E: Proteintech-CN@ptglab.com

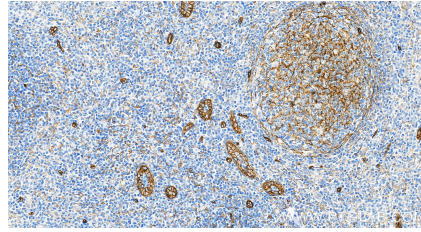
W: ptgcn.com

This product is exclusively available under Proteintech Group brand and is not available to purchase from any other manufacturer.

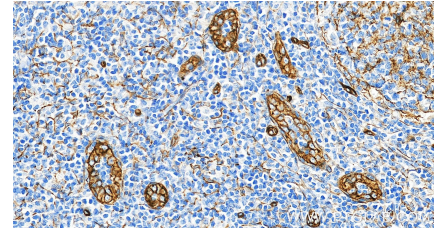
Selected Validation Data



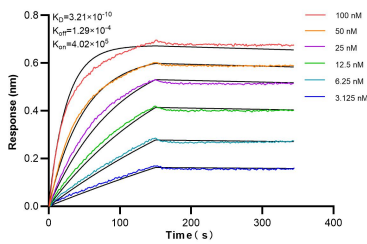
1x10⁶ HeLa cells were surface stained with 0.25 ug Anti-Human CD146/MCAM Rabbit RecAb (98561-2-RR, Clone: 250530B2) (red) or Rabbit IgG Isotype Control RecAb (98136-1-RR, Clone: 240953C9) (blue), and PE-Conjugated Goat Anti-Rabbit IgG(H+L). Cells were not fixed.



Immunohistochemical analysis of paraffin-embedded human tonsillitis tissue slide using 98561-2-RR (CD146/MCAM antibody) at dilution of 1:1000 (under 20x lens). Heat mediated antigen retrieval with Tris-EDTA buffer (pH 9.0).



Immunohistochemical analysis of paraffin-embedded human tonsillitis tissue slide using 98561-2-RR (CD146/MCAM antibody) at dilution of 1:1000 (under 20x lens). Heat mediated antigen retrieval with Tris-EDTA buffer (pH 9.0).



Biolayer interferometry (BLI) kinetic assays of 98561-2-RR against Human CD146/MCAM were performed. The affinity constant is 0.321 nM.