

For Research Use Only

# Anti-Human CD147 Rabbit Recombinant Antibody, PBS Only

Catalog Number: 98558-1-PBS



## Basic Information

<b>Catalog Number:</b> 98558-1-PBS	<b>GenBank Accession Number:</b> BC009040	<b>Purification Method:</b> Protein A purification
<b>Concentration:</b> 1mg, 3 mg/ml	<b>GeneID (NCBI):</b> 682	<b>CloneNo.:</b> 251215H5
<b>Source:</b> Rabbit	<b>UNIPROT ID:</b> P35613	
<b>Isotype:</b> IgG	<b>Full Name:</b> basigin (Ok blood group)	
<b>Immunogen Catalog Number:</b> EG0436	<b>Calculated MW:</b> 385 aa, 42 kDa	

## Applications

**Tested Applications:**  
FC

**Species Specificity:**  
human

## Background Information

CD147, also known as Basigin or extracellular matrix metalloproteinase inducer (EMMPRIN), is a transmembrane glycoprotein that belongs to the immunoglobulin superfamily (PMID: 7812975). The molecule is composed of an intracellular portion, an extracellular portion and a single transmembrane region. CD147 is expressed on a variety of cell types (e.g., hematopoietic, epithelial, and endothelial cells) and at varying levels (PMID: 32968061). CD147 is a pleiotropic molecule that plays an important role in fetal, neuronal, lymphocyte and extracellular matrix development (PMID: 17945211).

## Storage

**Storage:**  
Store at -80°C.  
**The product is shipped with ice packs. Upon receipt, store it immediately at -80°C**

**Storage Buffer:**  
PBS only, pH7.3

For technical support and original validation data for this product please contact:

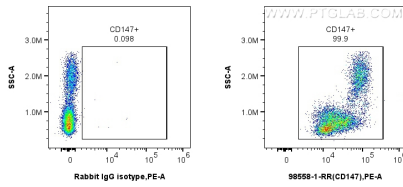
T: 4006900926

E: [Proteintech-CN@ptglab.com](mailto:Proteintech-CN@ptglab.com)

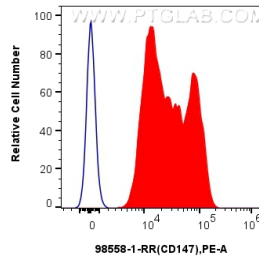
W: [ptgcn.com](http://ptgcn.com)

**This product is exclusively available under Proteintech Group brand and is not available to purchase from any other manufacturer.**

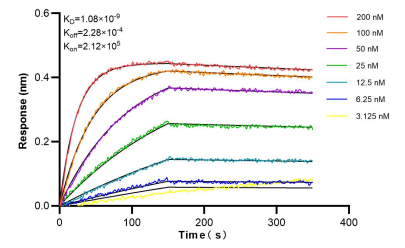
## Selected Validation Data



1x10<sup>6</sup> human PBMCs were surface stained with 0.25 ug Anti-Human CD147 Rabbit RecAb (98558-1-RR, Clone: 251215H5) or 0.25 ug Rabbit IgG Isotype Control RecAb (98136-1-RR, Clone: 240953C9), and PE-Conjugated Goat Anti-Rabbit IgG(H+L). Cells were incubated with FC Receptor Block prior to staining. Cells were not fixed. This data was developed using the same antibody clone with 98558-1-PBS in a different storage buffer formulation.



1x10<sup>6</sup> human PBMCs were surface stained with 0.25 ug Anti-Human CD147 Rabbit RecAb (98558-1-RR, Clone:251215H5) (red) or 0.25 ug Rabbit IgG Isotype Control RecAb (98136-1-RR, Clone: 240953C9) (blue), and PE-Conjugated Goat Anti-Rabbit IgG(H+L). Cells were incubated with FC Receptor Block prior to staining. Cells were not fixed. This data was developed using the same antibody clone with 98558-1-PBS in a different storage buffer formulation.



Bi-layer interferometry (BLI) kinetic assays of 98558-1-RR against Human CD147 were performed. The affinity constant is 1.08 nM.