

For Research Use Only

Anti-Human FCRL1 Rabbit Recombinant Antibody, PBS Only

Catalog Number: 98557-1-PBS



Basic Information

Catalog Number: 98557-1-PBS	GenBank Accession Number: BC033690	Purification Method: Protein A purification
Concentration: 1mg, 3 mg/ml	GeneID (NCBI): 115350	CloneNo.: 251080E1
Source: Rabbit	UNIPROT ID: Q96LA6	
Isotype: IgG	Full Name: Fc receptor-like 1	
Immunogen Catalog Number: EG3713	Calculated MW: 429 aa, 47 kDa	

Applications

Tested Applications:
FC

Species Specificity:
human

Background Information

Fc receptor-like protein 1 (FCRL1) is a type I transmembrane glycoprotein that plays a crucial role in regulating B-cell receptor (BCR)-mediated signaling responses (PMID:15479727). It contains intracellular tyrosine-based motifs that can modulate BCR signaling, leading to changes in calcium flux, proliferation, and antibody production (PMID: 37822931). FCRL1 is involved in regulating B-cell development and activation, with its signaling pathways influencing ERK activation through interactions with proteins such as GRB2. This regulation is essential for maintaining B-cell homeostasis and preventing the development of autoreactive B cells (PMID: 34697226).

Storage

Storage:
Store at -80°C.
The product is shipped with ice packs. Upon receipt, store it immediately at -80°C

Storage Buffer:
PBS only, pH7.3

For technical support and original validation data for this product please contact:

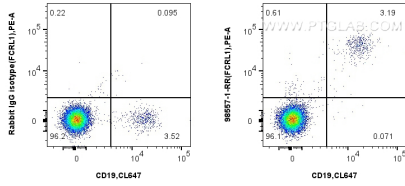
T: 4006900926

E: Proteintech-CN@ptglab.com

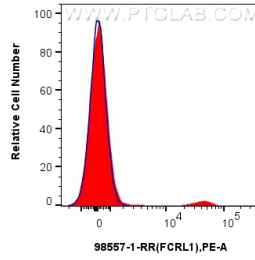
W: ptgcn.com

This product is exclusively available under Proteintech Group brand and is not available to purchase from any other manufacturer.

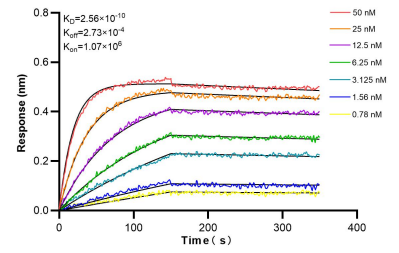
Selected Validation Data



1x10⁶ human PBMCs were surface stained with 0.25 ug Anti-Human FCRL1 Rabbit RecAb (98557-1-RR, Clone: 251080E1) or 0.25 ug Rabbit IgG Isotype Control RecAb (98136-1-RR, Clone: 240953C9), and PE-Conjugated Goat Anti-Rabbit IgG(H+L). Cells were not fixed. This data was developed using the same antibody clone with 98557-1-PBS in a different storage buffer formulation.



1x10⁶ human PBMCs were surface stained with 0.25 ug Anti-Human FCRL1 Rabbit RecAb (98557-1-RR, Clone: 251080E1) (red) or 0.25 ug Rabbit IgG Isotype Control RecAb (98136-1-RR, Clone: 240953C9) (blue), and PE-Conjugated Goat Anti-Rabbit IgG(H+L). Cells were not fixed. This data was developed using the same antibody clone with 98557-1-PBS in a different storage buffer formulation.



Bi-layer interferometry (BLI) kinetic assays of 98557-1-RR against Human FCRL1 were performed. The affinity constant is 0.256 nM.