

For Research Use Only

Anti-Mouse CD107a / LAMP1 Rabbit Recombinant Antibody, PBS Only

Catalog Number: 98537-2-PBS



Basic Information

| | | |
|--|--|---|
| Catalog Number: 98537-2-PBS | GenBank Accession Number: NM_010684.3 | Purification Method: Protein A purification |
| Concentration: 1mg, 3 mg/ml | GeneID (NCBI): 16783 | CloneNo.: 250972H5 |
| Source: Rabbit | UNIPROT ID: P11438 | |
| Isotype: IgG | Full Name: lysosomal-associated membrane protein 1 | |
| Immunogen Catalog Number: EG3858 | Calculated MW: 44 kDa | |

Applications

Tested Applications:
IF/ICC, IF-P, FC

Species Specificity:
mouse

Background Information

LAMP1 (CD107a) is a heavily glycosylated membrane protein enriched in the lysosomal membrane. LAMP1 is extensively glycosylated with asparagine-linked oligosaccharides which protect it from intracellular proteolysis (PMID: 10521503). Although LAMP1 is expressed largely in the endosome-lysosomal membrane of cells, it is also found on the plasma membrane (PMID: 16168398). Elevated LAMP1 expression at the cell surface has also been detected during platelet and granulocytic cell activation, as well as in some tumor cells (PMID: 29085473). LAMP1 functions to provide selectins with carbohydrate ligands. This protein has also been shown to be a marker of degranulation on lymphocytes such as CD8+ and NK cells and may also play a role in tumor cell differentiation and metastasis (PMID: 18835598; 29085473; 9426697).

Storage

Storage:
Store at -80°C.
The product is shipped with ice packs. Upon receipt, store it immediately at -80°C

Storage Buffer:
PBS only, pH7.3

For technical support and original validation data for this product please contact:

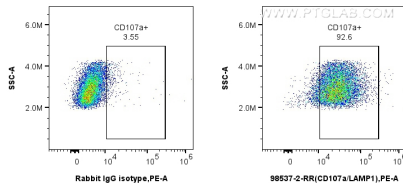
T: 4006900926

E: Proteintech-CN@ptglab.com

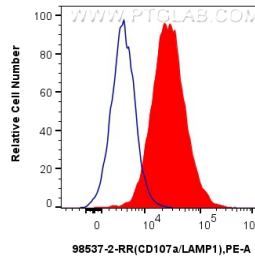
W: ptgcn.com

This product is exclusively available under Proteintech Group brand and is not available to purchase from any other manufacturer.

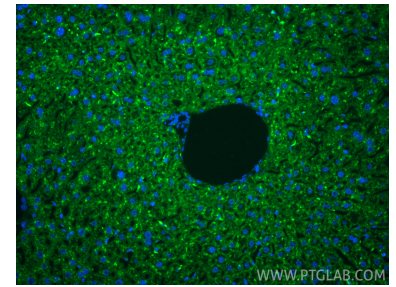
Selected Validation Data



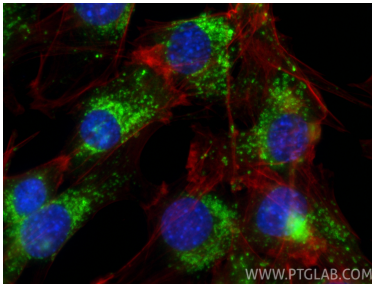
1x10⁶ mouse peritoneal macrophages were surface stained with 0.25 ug Anti-Mouse LAMP-1/CD107a Rabbit RecAb (98537-2-RR, Clone: 250972H5) or 0.25 ug Rabbit IgG Isotype Control RecAb (98136-1-RR, Clone: 240953C9), and PE-Conjugated Goat Anti-Rabbit IgG(H+L). Cells were not fixed. This data was developed using the same antibody clone with 98537-2-PBS in a different storage buffer formulation.



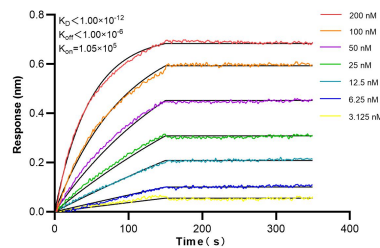
1x10⁶ mouse peritoneal macrophages were surface stained with 0.25 ug Anti-Mouse LAMP-1/CD107a Rabbit RecAb (98537-2-RR, Clone: 250972H5) (red) or 0.25 ug Rabbit IgG Isotype Control RecAb (98136-1-RR, Clone: 240953C9) (blue), and PE-Conjugated Goat Anti-Rabbit IgG(H+L). Cells were not fixed. This data was developed using the same antibody clone with 98537-2-PBS in a different storage buffer formulation.



Immunofluorescent analysis of (4% PFA) fixed paraffin-embedded mouse liver tissue using LAMP-1/CD107a antibody (98537-2-RR, Clone: 250972H5) at dilution of 1:200 and CoraLite®488-Conjugated Goat Anti-Rabbit IgG(H+L) (SA00013-2). Heat mediated antigen retrieval with Tris-EDTA buffer (pH 9.0). This data was developed using the same antibody clone with 98537-2-PBS in a different storage buffer formulation.



Immunofluorescent analysis of (4% PFA) fixed C2C12 cells using LAMP-1/CD107a antibody (98537-2-RR, Clone: 250972H5) at dilution of 1:400 and CoraLite®488-Conjugated Goat Anti-Rabbit IgG(H+L) (SA00013-2), CL594-phalloidin (red). This data was developed using the same antibody clone with 98537-2-PBS in a different storage buffer formulation.



Biolayer interferometry (BLI) kinetic assays of 98537-2-RR against Mouse CD107a / LAMP1 were performed. The affinity constant is below 1 pM.