

For Research Use Only

# Anti-Human PLXNC1 Rabbit Recombinant Antibody, PBS Only

Catalog Number: 98534-2-PBS



## Basic Information

<b>Catalog Number:</b> 98534-2-PBS	<b>GenBank Accession Number:</b> NM_005761.3	<b>Purification Method:</b> Protein A purification
<b>Concentration:</b> 1mg, 3 mg/ml	<b>GeneID (NCBI):</b> 10154	<b>CloneNo.:</b> 250374F2
<b>Source:</b> Rabbit	<b>UNIPROT ID:</b> O60486	
<b>Isotype:</b> IgG	<b>Full Name:</b> plexin C1	
<b>Immunogen Catalog Number:</b> EG2721	<b>Calculated MW:</b> 176 kDa	

## Applications

**Tested Applications:**  
FC

**Species Specificity:**  
human

## Background Information

PLXNC1 (Plexin-C1) is a semaphorin receptor that bridges extracellular guidance cues to intracellular GTPase signaling, influencing cell adhesion, migration, and immune modulation. Predominantly expressed in neuronal, epithelial, and immune tissues, PLXNC1 regulates axon guidance and inflammatory balance via SEMA7A-dependent pathways. Dysregulated PLXNC1 signaling contributes to cancer progression, immune dysregulation, and neuronal pathologies, highlighting its versatile role in cell communication and morphogenesis.

## Storage

**Storage:**  
Store at -80°C.  
**The product is shipped with ice packs. Upon receipt, store it immediately at -80°C**

**Storage Buffer:**  
PBS only, pH7.3

For technical support and original validation data for this product please contact:

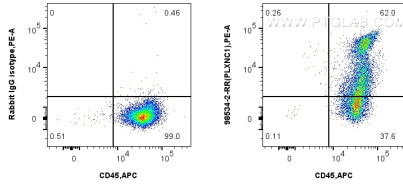
T: 4006900926

E: [Proteintech-CN@ptglab.com](mailto:Proteintech-CN@ptglab.com)

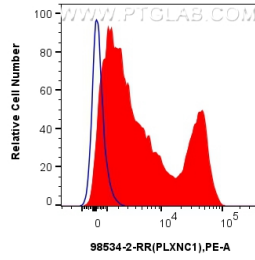
W: [ptgcn.com](http://ptgcn.com)

**This product is exclusively available under Proteintech Group brand and is not available to purchase from any other manufacturer.**

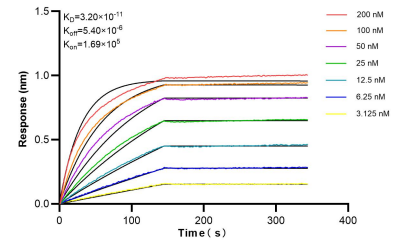
## Selected Validation Data



1x10<sup>6</sup> human PBMCs were surface stained with 0.25 ug Anti-Human PLXNC1 Rabbit RecAb (98534-2-RR, Clone: 250374F2) or 0.25 ug Rabbit IgG Isotype Control RecAb (98136-1-RR, Clone: 240953C9), and PE-Conjugated Goat Anti-Rabbit IgG(H+L). Cells were then stained with APC Anti-Human CD45 Rabbit Recombinant Antibody (APC-98117, Clone: 241670E10). Cells were incubated with FC Receptor Block prior to staining. Cells were not fixed. This data was developed using the



1x10<sup>6</sup> human PBMCs were surface stained with 0.25 ug Anti-Human PLXNC1 Rabbit RecAb (98534-2-RR, Clone: 250374F2) (red) or 0.25 ug Rabbit IgG Isotype Control RecAb (98136-1-RR, Clone: 240953C9) (blue), and PE-Conjugated Goat Anti-Rabbit IgG(H+L). Cells were incubated with FC Receptor Block prior to staining. Cells were not fixed. This data was developed using the same antibody clone with 98534-2-PBS in a different storage buffer formulation.



Bioluminescence resonance energy transfer (BRET) kinetic assays of 98534-2-RR against Human PLXNC1 were performed. The affinity constant is 32.0 pM.