

For Research Use Only

Anti-Human CD31 Rabbit Recombinant Antibody, PBS Only

Catalog Number: 98533-1-PBS



Basic Information

Catalog Number: 98533-1-PBS	GenBank Accession Number: NM_000442.5	Purification Method: Protein A purification
Concentration: 1mg, 3 mg/ml	GeneID (NCBI): 5175	CloneNo.: 251101E6
Source: Rabbit	ENSEMBL Gene ID: ENSG00000261371	
Isotype: IgG	UNIPROT ID: P16284-1	
Immunogen Catalog Number: EG4658	Full Name: platelet/endothelial cell adhesion molecule	
	Calculated MW: 83 kDa	

Applications

Tested Applications:
FC

Species Specificity:
human

Background Information

CD31, also known as PECAM1 (Platelet endothelial cell adhesion molecule), is a member of the immunoglobulin gene superfamily of cell adhesion molecules. CD31 is a transmembrane glycoprotein that is highly expressed on the surface of the endothelium, making up a large portion of its intracellular junctions. It is also present on the surface of hematopoietic cells and immune cells including platelets, monocytes, neutrophils, natural killer cells, megakaryocytes and some types of T-cell (PMID: 9011572). As well as its role in cell-cell adhesion, CD31 functions as a signaling receptor, and is involved in important physiological events such as nitric oxide production, regulation of T-cell immunity and tolerance, leukocyte transendothelial migration and inflammation and angiogenesis (PMID: 21183735; 20978210; 17872453; 20634489).

Storage

Storage:
Store at -80°C.

The product is shipped with ice packs. Upon receipt, store it immediately at -80°C

Storage Buffer:
PBS only, pH7.3

For technical support and original validation data for this product please contact:

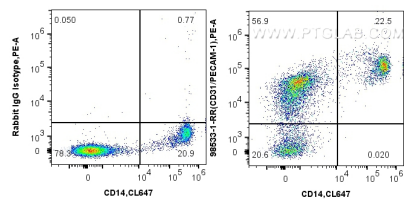
T: 4006900926

E: Proteintech-CN@ptglab.com

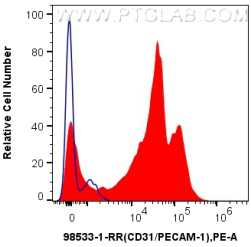
W: ptgcn.com

This product is exclusively available under Proteintech Group brand and is not available to purchase from any other manufacturer.

Selected Validation Data



1x10⁶ human PBMCs were surface stained with 0.25 ug Anti-Human CD31 Rabbit RecAb (98533-1-RR, Clone: 251101E6) or Rabbit IgG Isotype Control RecAb (98136-1-RR, Clone: 240953C9), and PE-Conjugated Goat Anti-Rabbit IgG(H+L). Cells were then stained with CoraLite® Plus 647 Anti-Human CD14. Cells were incubated with FC Receptor Block prior to staining. Cells were not fixed. This data was developed using the same antibody clone with 98533-1-PBS in a different storage buffer



1x10⁶ human PBMCs were surface stained with 0.25 ug Anti-Human CD31 Rabbit RecAb (98533-1-RR, Clone: 251101E6) (red) or Rabbit IgG Isotype Control RecAb (98136-1-RR, Clone: 240953C9) (blue), and PE-Conjugated Goat Anti-Rabbit IgG(H+L). Cells were incubated with FC Receptor Block prior to staining. Cells were not fixed. This data was developed using the same antibody clone with 98533-1-PBS in a different storage buffer formulation.