

For Research Use Only

Anti-Human CD45RB/RAB Rabbit Recombinant Antibody, PBS Only

Catalog Number: 98531-5-PBS



Basic Information

Catalog Number: 98531-5-PBS	GenBank Accession Number: NM_002838.4	Purification Method: Protein A purification
Concentration: 1mg, 3 mg/ml	GeneID (NCBI): 5788	CloneNo.: 242918F3
Source: Rabbit	ENSEMBL Gene ID: ENSG00000081237	
Isotype: IgG	UNIPROT ID: P08575-3	
	Full Name: protein tyrosine phosphatase, receptor type, C	
	Calculated MW: 147 kDa	

Applications

Tested Applications:
FC

Species Specificity:
human

Background Information

CD45RB and CD45RAB are specific isoforms of CD45, a receptor-type protein tyrosine phosphatase (PTP) found on the surface of all nucleated hematopoietic cells, except mature erythrocytes and platelets. They serve as essential phenotypic markers to distinguish naïve T lymphocytes from antigen-experienced memory/effector T cells. CD45RB and CD45RAB designations refer to specific isoforms of CD45 generated through alternative splicing of three variable exons (4, 5, and 6) in the PTPRC gene. These exons encode extracellular domains A, B, and C, respectively, which contain O-linked glycosylation sites that affect the molecule's size, charge, and ligand-binding properties. This antibody can detect CD45RB (contains exons B only) and CD45RAB (contains both exons A and B), but not CD45RABC (contain all three exons) or CD45RBC (contain exons B and C).

Storage

Storage:
Store at -80°C.
The product is shipped with ice packs. Upon receipt, store it immediately at -80°C

Storage Buffer:
PBS only, pH7.3

For technical support and original validation data for this product please contact:

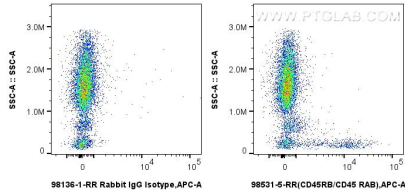
T: 4006900926

E: Proteintech-CN@ptglab.com

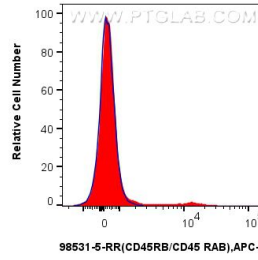
W: ptgcn.com

This product is exclusively available under Proteintech Group brand and is not available to purchase from any other manufacturer.

Selected Validation Data



1x10⁶ human peripheral blood leukocyte were surface stained with 0.25 ug Anti-Human CD45RB/RAB Rabbit RecAb (98531-5-RR, Clone:242918F3), or 0.25 ug Rabbit IgG Isotype Control RecAb (98136-1-RR, Clone: 240953C9) and APC-Conjugated Goat Anti-Rabbit IgG(H+L). Cells were incubated with FC Receptor Block prior to staining. Cells were not fixed. This data was developed using the same antibody clone with 98531-5-PBS in a different storage buffer formulation.



1x10⁶ human peripheral blood leukocyte were surface stained with 0.25 ug Anti-Human PTPRC/CD45-RB Rabbit RecAb (98531-5-RR, Clone:242918F3) (red), or 0.25 ug Rabbit IgG Isotype Control RecAb (98136-1-RR, Clone: 240953C9) (blue) and APC-Conjugated Goat Anti-Rabbit IgG(H+L). Cells were incubated with FC Receptor Block prior to staining. Cells were not fixed. This data was developed using the same antibody clone with 98531-5-PBS in a different storage buffer formulation.