

For Research Use Only

Anti-Human ACE2 Rabbit Recombinant Antibody, PBS Only

Catalog Number: 98529-1-PBS



Basic Information

Catalog Number: 98529-1-PBS	GenBank Accession Number: BC048094	Purification Method: Protein A purification
Concentration: 1mg, 3 mg/ml	GeneID (NCBI): 59272	CloneNo.: 250363F10
Source: Rabbit	UNIPROT ID: Q9BYF1	
Isotype: IgG	Full Name: angiotensin I converting enzyme (peptidyl-dipeptidase A) 2	
Immunogen Catalog Number: EG0074	Calculated MW: 805 aa, 92 kDa	

Applications

Tested Applications:
FC
Species Specificity:
human

Background Information

ACE2 (Angiotensin-converting enzyme 2), also named as ACEH, is a zinc metalloprotease of the ACE family and a critical regulator of the reninangiotensin system. ACE2 has a more restricted tissue distribution than ACE, being found predominantly in the heart, kidneys, and testes although low levels have been detected in a variety of tissues (PMID:15983030). ACE2 has been shown to be a functional receptor of the human coronaviruses SARS-CoV and SARS-CoV-2 (PMID: 32142651). The expression level and expression pattern of human ACE2 in different tissues might be critical for the susceptibility, symptoms, and outcome of 2019-nCoV/SARS-CoV-2 infection (PMID: 32133153). It can be used as a potential therapeutic target of SARS-CoV-2 (PMID: 32125455).

Storage

Storage:
Store at -80°C.
The product is shipped with ice packs. Upon receipt, store it immediately at -80°C
Storage Buffer:
PBS only, pH7.3

For technical support and original validation data for this product please contact:

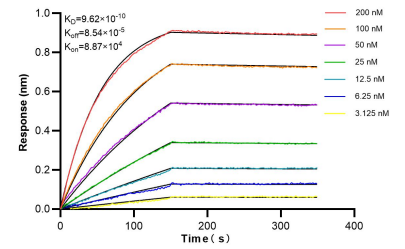
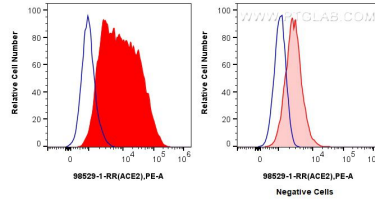
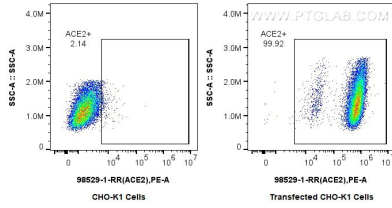
T: 4006900926

E: Proteintech-CN@ptglab.com

W: ptgcn.com

This product is exclusively available under Proteintech Group brand and is not available to purchase from any other manufacturer.

Selected Validation Data



1x10⁶ CKO-K1(left) or ACE2-transfected CKO-K1(right) were surface stained with 0.25 ug Anti-Human ACE2 Rabbit RecAb (98529-1-RR, Clone:250363F10) and PE-Conjugated Goat Anti-Rabbit IgG(H+L). Cells were fixed and permeabilized with Intracellular Flow Cytometry Fixation & Permeabilization Buffer Kit (PF00019). This data was developed using the same antibody clone with 98529-1-PBS in a different storage buffer formulation.

1x10⁶ Calu-3 cells(left) or HeLa cells(right) were surface stained with 0.25 ug Anti-Human ACE2 Rabbit RecAb (98529-1-RR, Clone:250363F10)(red), or 0.25 ug Rabbit IgG Isotype Control RecAb (98136-1-RR, Clone:240953C9) (blue) and PE-Conjugated Goat Anti-Rabbit IgG(H+L). Cells were fixed and permeabilized with Intracellular Flow Cytometry Fixation & Permeabilization Buffer Kit (PF00019). This data was developed using the same antibody clone with 98529-1-PBS in

Bi-layer interferometry (BLI) kinetic assays of 98529-1-RR against Human ACE2 were performed. The affinity constant is 0.962 nM.