

For Research Use Only

Anti-Human BCAM Rabbit Recombinant Antibody

Catalog Number: 98521-3-RR



Basic Information

Catalog Number: 98521-3-RR	GenBank Accession Number: BC050450	Purification Method: Protein A purification
Concentration: 100ug, 1000 µg/ml	GeneID (NCBI): 4059	CloneNo.: 250778C11
Source: Rabbit	UNIPROT ID: P50895	Recommended Dilutions: IF/ICC: 1:250-1:1000 FC: 0.25 ug per 10 ⁶ cells in a 100 µl suspension
Isotype: IgG	Full Name: basal cell adhesion molecule (Lutheran blood group)	
Immunogen Catalog Number: EG2567	Calculated MW: 67 kDa	

Applications

Tested Applications: IF/ICC, FC	Positive Controls: IF/ICC : HT-29 cells, FC : human peripheral blood erythrocytes,
Species Specificity: human	

Background Information

Basal cell adhesion molecule (Lu/BCAM) is a membrane-bound glycoprotein of the immunoglobulin superfamily (IgSF), functioning as a receptor for the extracellular matrix protein, laminin. BCAM (Lutheran/basal cell-adhesion molecule, a glycoprotein) belongs to the immunoglobulin superfamily which contains both Lu blood group and BCAM tumor-associated antigens. Proteomics analysis suggests that BCAM might be a potential biomarker for pancreatic cancer (PMID: 19199705). BCAM, involved in cell adhesion and migration, can also promote tumor metastasis and has been elucidated to play a functional role in the metastasis of thyroid cancer and gastric cancer (PMID: 10728810, 35941663).

Storage

Storage:
Store at 2 - 8°C. Stable for one year after shipment.
Storage Buffer:
PBS with 0.09% sodium azide, pH7.3

For technical support and original validation data for this product please contact:

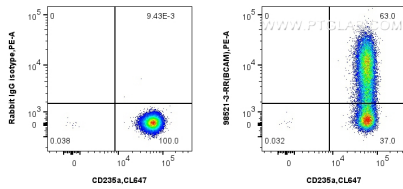
T: 4006900926

E: Proteintech-CN@ptglab.com

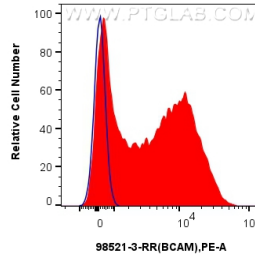
W: ptgcn.com

This product is exclusively available under Proteintech Group brand and is not available to purchase from any other manufacturer.

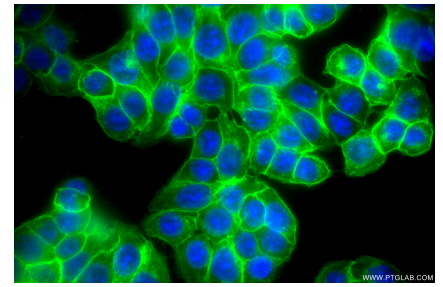
Selected Validation Data



1x10⁶ human peripheral blood erythrocytes were surface stained with 0.25 ug Anti-Human BCAM Rabbit RecAb (98521-3-RR, Clone: 250778C11) or 0.25 ug Rabbit IgG Isotype Control RecAb (98136-1-RR, Clone: 240953C9), and PE-Conjugated Goat Anti-Rabbit IgG(H+L). Cells were not fixed.



1x10⁶ human peripheral blood erythrocytes were surface stained with 0.25 ug Anti-Human BCAM Rabbit RecAb (98521-3-RR, Clone: 250778C11) (red) or 0.25 ug Rabbit IgG Isotype Control RecAb (98136-1-RR, Clone: 240953C9) (blue), and PE-Conjugated Goat Anti-Rabbit IgG(H+L). Cells were not fixed.



Immunofluorescent analysis of (-20°C Methanol) fixed HT-29 cells using BCAM antibody (98521-3-RR, Clone: 250778C11) at dilution of 1:500 and CoraLite@488-Conjugated Goat Anti-Rabbit IgG(H+L) (SA00013-2).