

For Research Use Only

# Anti-Human BCAM Rabbit Recombinant Antibody, PBS Only

Catalog Number: 98521-3-PBS



## Basic Information

<b>Catalog Number:</b> 98521-3-PBS	<b>GenBank Accession Number:</b> BC050450	<b>Purification Method:</b> Protein A purification
<b>Concentration:</b> 1mg, 3 mg/ml	<b>GeneID (NCBI):</b> 4059	<b>CloneNo.:</b> 250778C11
<b>Source:</b> Rabbit	<b>UNIPROT ID:</b> P50895	
<b>Isotype:</b> IgG	<b>Full Name:</b> basal cell adhesion molecule (Lutheran blood group)	
<b>Immunogen Catalog Number:</b> EG2567	<b>Calculated MW:</b> 67 kDa	

## Applications

**Tested Applications:**  
IF/ICC, FC

**Species Specificity:**  
human

## Background Information

Basal cell adhesion molecule (Lu/BCAM) is a membrane-bound glycoprotein of the immunoglobulin superfamily (IgSF), functioning as a receptor for the extracellular matrix protein, laminin. BCAM (Lutheran/basal cell-adhesion molecule, a glycoprotein) belongs to the immunoglobulin superfamily which contains both Lu blood group and BCAM tumor-associated antigens. Proteomics analysis suggests that BCAM might be a potential biomarker for pancreatic cancer (PMID: 19199705). BCAM, involved in cell adhesion and migration, can also promote tumor metastasis and has been elucidated to play a functional role in the metastasis of thyroid cancer and gastric cancer (PMID: 10728810, 35941663).

## Storage

**Storage:**  
Store at -80°C.  
**The product is shipped with ice packs. Upon receipt, store it immediately at -80°C**

**Storage Buffer:**  
PBS only, pH7.3

For technical support and original validation data for this product please contact:

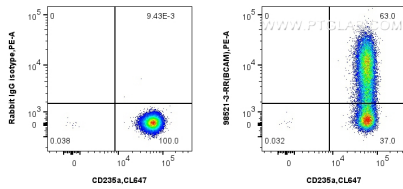
T: 4006900926

E: [Proteintech-CN@ptglab.com](mailto:Proteintech-CN@ptglab.com)

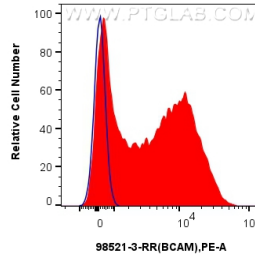
W: [ptgcn.com](http://ptgcn.com)

**This product is exclusively available under Proteintech Group brand and is not available to purchase from any other manufacturer.**

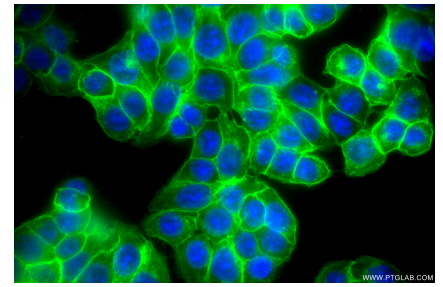
## Selected Validation Data



1x10<sup>6</sup> human peripheral blood erythrocytes were surface stained with 0.25 ug Anti-Human BCAM Rabbit RecAb (98521-3-RR, Clone: 250778C11) or 0.25 ug Rabbit IgG Isotype Control RecAb (98136-1-RR, Clone: 240953C9), and PE-Conjugated Goat Anti-Rabbit IgG(H+L). Cells were not fixed. This data was developed using the same antibody clone with 98521-3-PBS in a different storage buffer formulation.



1x10<sup>6</sup> human peripheral blood erythrocytes were surface stained with 0.25 ug Anti-Human BCAM Rabbit RecAb (98521-3-RR, Clone: 250778C11) (red) or 0.25 ug Rabbit IgG Isotype Control RecAb (98136-1-RR, Clone: 240953C9) (blue), and PE-Conjugated Goat Anti-Rabbit IgG(H+L). Cells were not fixed. This data was developed using the same antibody clone with 98521-3-PBS in a different storage buffer formulation.



Immunofluorescent analysis of (-20°C Methanol) fixed HT-29 cells using BCAM antibody (98521-3-RR, Clone: 250778C11) at dilution of 1:500 and CoraLite@488-Conjugated Goat Anti-Rabbit IgG(H+L) (SA00013-2). This data was developed using the same antibody clone with 98521-3-PBS in a different storage buffer formulation.