

For Research Use Only

# Anti-Mouse ACE2 Rabbit Recombinant Antibody, PBS Only

Catalog Number: 98508-1-PBS



## Basic Information

<b>Catalog Number:</b> 98508-1-PBS	<b>GenBank Accession Number:</b> NM_001130513.1	<b>Purification Method:</b> Protein A purification
<b>Concentration:</b> 1mg, 3 mg/ml	<b>GeneID (NCBI):</b> 70008	<b>CloneNo.:</b> 250137D6
<b>Source:</b> Rabbit	<b>UNIPROT ID:</b> Q8R0I0-1	
<b>Isotype:</b> IgG	<b>Full Name:</b> angiotensin I converting enzyme (peptidyl-dipeptidase A) 2	
<b>Immunogen Catalog Number:</b> EG2834	<b>Calculated MW:</b> 92 kDa	

## Applications

**Tested Applications:**  
FC

**Species Specificity:**  
mouse

## Background Information

ACE2 (Angiotensin-converting enzyme 2), also named as ACEH, is a zinc metalloprotease of the ACE family and a critical regulator of the reninangiotensin system. ACE2 has a more restricted tissue distribution than ACE, being found predominantly in the heart, kidneys, and testes although low levels have been detected in a variety of tissues (PMID:15983030). ACE2 has been shown to be a functional receptor of the human coronaviruses SARS-CoV and SARS-CoV-2 (PMID: 32142651). The expression level and expression pattern of human ACE2 in different tissues might be critical for the susceptibility, symptoms, and outcome of 2019-nCoV/SARS-CoV-2 infection (PMID: 32133153). It can be used as a potential therapeutic target of SARS-CoV-2 (PMID: 32125455).

## Storage

**Storage:**  
Store at -80°C.  
**The product is shipped with ice packs. Upon receipt, store it immediately at -80°C**

**Storage Buffer:**  
PBS only, pH7.3

For technical support and original validation data for this product please contact:

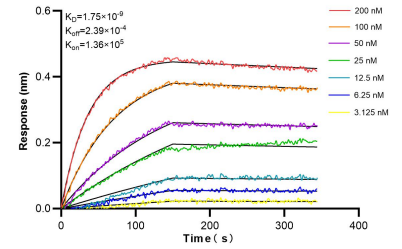
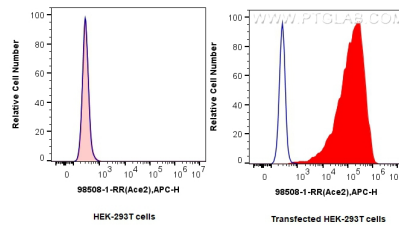
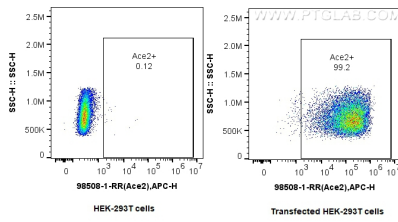
T: 4006900926

E: [Proteintech-CN@ptglab.com](mailto:Proteintech-CN@ptglab.com)

W: [ptgcn.com](http://ptgcn.com)

**This product is exclusively available under Proteintech Group brand and is not available to purchase from any other manufacturer.**

## Selected Validation Data



$1 \times 10^6$  HEK-293T cells and ACE2-transfected HEK-293T cells were surface stained with 0.25  $\mu$ g Anti-Mouse Ace2 Rabbit RecAb (98508-1-RR, Clone: 250137D6) and APC-Conjugated Goat Anti-Rabbit IgG(H+L). Cells were not fixed. This data was developed using the same antibody clone with 98508-1-PBS in a different storage buffer formulation.

$1 \times 10^6$  HEK-293T cells and ACE2-transfected HEK-293T cells were surface stained with 0.25  $\mu$ g Anti-Mouse Ace2 Rabbit RecAb (98508-1-RR, Clone: 250137D6) (red) or 0.25  $\mu$ g Rabbit IgG Isotype Control RecAb (98136-1-RR, Clone: 240953C9) (blue) and APC-Conjugated Goat Anti-Rabbit IgG(H+L). Cells were not fixed. This data was developed using the same antibody clone with 98508-1-PBS in a different storage buffer formulation.

Bi-layer interferometry (BLI) kinetic assays of 98508-1-RR against Mouse ACE2 were performed. The affinity constant is 1.75 nM.