

For Research Use Only

# Anti-Human TGF beta 1 Rabbit Recombinant Antibody

Catalog Number:98506-5-RR



## Basic Information

Catalog Number:

98506-5-RR

Concentration:

100ug, 1000 µg/ml

Source:

Rabbit

Isotype:

IgG

Immunogen Catalog Number:

EG0879

GenBank Accession Number:

GeneID (NCBI):

7040

UNIPROT ID:

P01137

Full Name:

transforming growth factor, beta 1

Calculated MW:

44 kDa

Purification Method:

Protein A purification

CloneNo.:

250119E2

Recommended Dilutions:

FC: 0.25 ug per 10<sup>6</sup> cells in a 100 µl suspension

## Applications

Tested Applications:

FC

Species Specificity:

human

Positive Controls:

FC : Anti-CD3/CD28 treated human PBMCs,

## Background Information

TGF Beta 1 (TGF-β 1) is a pleiotropic cytokine and a member of the TGF-β superfamily (including TGF-β 1, TGF-β 2, and TGF-β 3). It is encoded by the TGFB1 gene and acts as a secreted protein involved in controlling cell growth, proliferation, differentiation, and apoptosis. TGF-β 1 is produced by various cell types (e.g., platelets, lymphocytes, macrophages, epithelial cells, and inflammatory cells) and is secreted as a precursor requiring proteolytic activation to yield the mature, biologically active peptide. TGF-β 1 plays crucial roles in immune regulation, wound healing, fibrosis, and tissue remodeling (including cardiac injury and fibrosis). It also influences cancer progression by promoting epithelial-to-mesenchymal transition (EMT) and metastasis in tumors.

## Storage

Storage:

Store at 2 - 8°C. Stable for one year after shipment.

Storage Buffer:

PBS with 0.09% sodium azide, pH7.3

For technical support and original validation data for this product please contact:

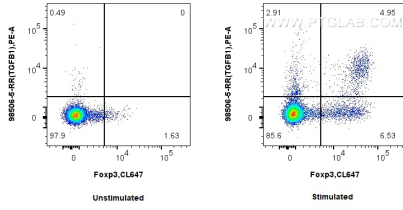
T: 4006900926

E: Proteintech-CN@ptglab.com

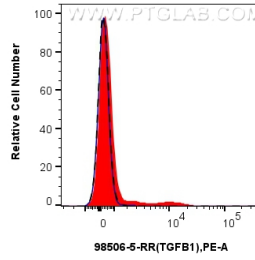
W: ptgcn.com

**This product is exclusively available under Proteintech Group brand and is not available to purchase from any other manufacturer.**

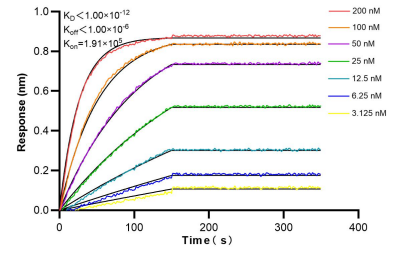
## Selected Validation Data



$1 \times 10^6$  untreated or anti-CD3/CD28 treated human PBMCs were surface stained with 0.25  $\mu$ g Anti-Human TGF beta 1 Rabbit RecAb (98506-5-RR, Clone: 250119E2) and PE-Conjugated Goat Anti-Rabbit IgG(H+L). Cells were then fixed and stained with Anti-Human Foxp3. CD4+ cells were pre-gated for analysis.



$1 \times 10^6$  anti-CD3/CD28 treated human PBMCs were surface stained with 0.25  $\mu$ g Anti-Human TGF $\beta$ 1 Rabbit RecAb (98506-5-RR, Clone: 250119E2) (red) or 0.25  $\mu$ g Rabbit IgG Isotype Control RecAb (98136-1-RR, Clone: 240953C9) (blue), and PE-Conjugated Goat Anti-Rabbit IgG(H+L).  $1 \times 10^6$  untreated human PBMCs were surface stained with 0.25  $\mu$ g Anti-Human TGF $\beta$ 1 Rabbit RecAb (98506-5-RR, Clone: 250119E2) (black, dashed) and PE-Conjugated Goat Anti-Rabbit IgG(H+L). CD4+ cells were



Bi-layer interferometry (BLI) kinetic assays of 98506-5-RR against Human TGF beta 1 were performed. The affinity constant is below 1 pM.