

For Research Use Only

Anti-Human TGF beta 1 Rabbit Recombinant Antibody, PBS Only

Catalog Number: 98506-5-PBS



Basic Information

Catalog Number: 98506-5-PBS	GenBank Accession Number: GeneID (NCBI): 7040	Purification Method: Protein A purification
Concentration: 1mg, 3000 µg/ml	UNIPROT ID: P01137	CloneNo.: 250119E2
Source: Rabbit	Full Name: transforming growth factor, beta 1	
Isotype: IgG	Calculated MW: 44 kDa	
Immunogen Catalog Number: EG0879		

Applications

Tested Applications:
FC

Species Specificity:
human

Background Information

TGF Beta 1 (TGF-β 1) is a pleiotropic cytokine and a member of the TGF-β superfamily (including TGF-β 1, TGF-β 2, and TGF-β 3). It is encoded by the TGFB1 gene and acts as a secreted protein involved in controlling cell growth, proliferation, differentiation, and apoptosis. TGF-β 1 is produced by various cell types (e.g., platelets, lymphocytes, macrophages, epithelial cells, and inflammatory cells) and is secreted as a precursor requiring proteolytic activation to yield the mature, biologically active peptide. TGF-β 1 plays crucial roles in immune regulation, wound healing, fibrosis, and tissue remodeling (including cardiac injury and fibrosis). It also influences cancer progression by promoting epithelial-to-mesenchymal transition (EMT) and metastasis in tumors.

Storage

Storage:
Store at -80°C.
The product is shipped with ice packs. Upon receipt, store it immediately at -80°C

Storage Buffer:
PBS only, pH7.3

For technical support and original validation data for this product please contact:

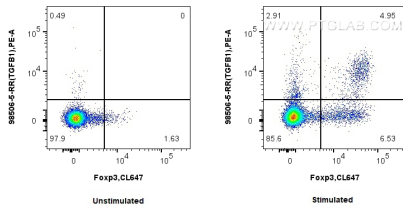
T: 4006900926

E: Proteintech-CN@ptglab.com

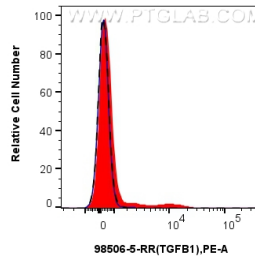
W: ptgcn.com

This product is exclusively available under Proteintech Group brand and is not available to purchase from any other manufacturer.

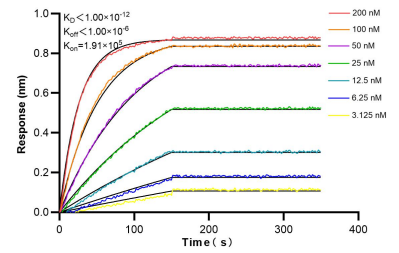
Selected Validation Data



1x10⁶ untreated or anti-CD3/CD28 treated human PBMCs were surface stained with 0.25 ug Anti-Human TGF beta 1 Rabbit RecAb (98506-5-RR, Clone: 250119E2) and PE-Conjugated Goat Anti-Rabbit IgG(H+L). Cells were then fixed and stained with Anti-Human Foxp3. CD4+ cells were pre-gated for analysis. This data was developed using the same antibody clone with 98506-5-PBS in a different storage buffer formulation.



1x10⁶ anti-CD3/CD28 treated human PBMCs were surface stained with 0.25 ug Anti-Human TGFB1 Rabbit RecAb (98506-5-RR, Clone: 250119E2) (red) or 0.25 ug Rabbit IgG Isotype Control RecAb (98136-1-RR, Clone: 240953C9) (blue), and PE-Conjugated Goat Anti-Rabbit IgG(H+L). 1x10⁶ untreated human PBMCs were surface stained with 0.25 ug Anti-Human TGFB1 Rabbit RecAb (98506-5-RR, Clone: 250119E2) (black, dashed) and PE-Conjugated Goat Anti-Rabbit IgG(H+L). CD4+ cells were



Bi-layer interferometry (BLI) kinetic assays of 98506-5-RR against Human TGF beta 1 were performed. The affinity constant is below 1 pM.