

For Research Use Only

# Anti-Mouse CCL1 Rabbit Recombinant Antibody

Catalog Number: 98502-2-RR



## Basic Information

Catalog Number:

98502-2-RR

Concentration:

100ug, 1000 µg/ml

Source:

Rabbit

Isotype:

IgG

Immunogen Catalog Number:

EG3293

GenBank Accession Number:

NM\_011329.3

GeneID (NCBI):

20290

UNIPROT ID:

P10146-1

Full Name:

chemokine (C-C motif) ligand 1

Calculated MW:

10KD

Purification Method:

Protein A purification

CloneNo.:

250094D6

Recommended Dilutions:

FC (Intra): 0.25 ug per 10<sup>6</sup> cells in a 100 µl suspension

## Applications

Tested Applications:

FC (Intra)

Species Specificity:

mouse

Positive Controls:

FC (Intra) : Transfected HEK-293T cells,

## Background Information

CCL1, also known as I-309 in human or TCA-3 in mice, is a small glycoprotein belonging to the CC chemokine family. It is predominantly expressed by activated T cells, monocytes, and endothelial cells, and primarily acts as a chemoattractant for monocytes and T cells. CCL1 binds to the receptor CCR8, which is expressed on monocytes, neutrophils, and T cells, including within the thymus. This chemokine may perform dual functions: as an inflammatory chemokine during leukocyte migration into inflammatory sites and as a constitutive chemokine during T cell selection in the thymus. Furthermore, CCL1 has been associated with allergic inflammation and the recruitment of Th2 cells, suggesting a role in allergic diseases such as asthma.

## Storage

Storage:

Store at 2 - 8°C. Stable for one year after shipment.

Storage Buffer:

PBS with 0.09% sodium azide, pH7.3

For technical support and original validation data for this product please contact:

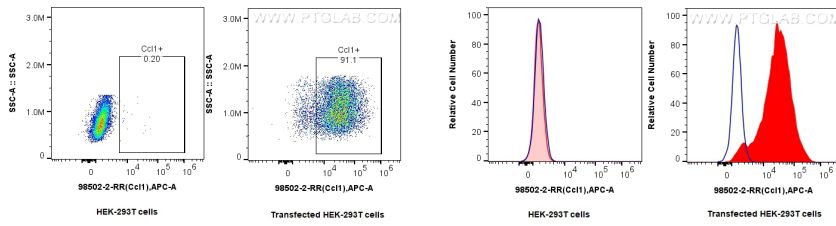
T: 4006900926

E: [Proteintech-CN@ptglab.com](mailto:Proteintech-CN@ptglab.com)

W: [ptgcn.com](http://ptgcn.com)

**This product is exclusively available under Proteintech Group brand and is not available to purchase from any other manufacturer.**

## Selected Validation Data



1x10<sup>6</sup> HEK-293T cells or CCL1-transfected HEK-293T cells were intracellularly stained with 0.25 ug Anti-Mouse CCL1 Rabbit RecAb (98502-2-RR, Clone: 250094D6) and APC-Conjugated Goat Anti-Rabbit IgG(H+L). Cells were fixed with 4% PFA and permeabilized with Flow Cytometry Perm Buffer.

1x10<sup>6</sup> HEK-293T cells or CCL1-transfected HEK-293T cells were intracellularly stained with 0.25 ug Anti-Mouse CCL1 Rabbit RecAb (98502-2-RR, Clone: 250094D6) (red) or 0.25 ug Rabbit IgG Isotype Control RecAb (98136-1-RR, Clone: 240953C9) (blue), and APC-Conjugated Goat Anti-Rabbit IgG(H+L). Cells were fixed with 4% PFA and permeabilized with Flow Cytometry Perm Buffer.