

For Research Use Only

# Anti-Mouse CCL22/MDC Rabbit Recombinant Antibody

Catalog Number: 98501-2-RR



## Basic Information

Catalog Number:

98501-2-RR

Concentration:

100ug, 1000 µg/ml

Source:

Rabbit

Isotype:

IgG

Immunogen Catalog Number:

EG2241

GenBank Accession Number:

NM\_009137

GeneID (NCBI):

20299

UNIPROT ID:

O88430

Full Name:

chemokine (C-C motif) ligand 22

Calculated MW:

10kd

Purification Method:

Protein A purification

CloneNo.:

250115D3

Recommended Dilutions:

FC (Intra): 0.25 ug per 10<sup>6</sup> cells in a 100 µl suspension

## Applications

Tested Applications:

FC (Intra)

Species Specificity:

mouse

Positive Controls:

FC (Intra) : Transfected HEK-293T cells,

## Background Information

The C-C motif chemokine ligand 22 (CCL22), also known as MDC, belongs to the group of chemokines, that are both constitutively expressed under homeostatic conditions and inducible upon inflammation. CCL22 is a secreted protein that exerts chemotactic activity for monocytes, dendritic cells, natural killer cells, and for chronically activated T lymphocytes. CCL22 is induced by LPS, IL-4, and IL-13 and in T cells by TCR stimulation. Accumulating studies indicate that CCL22 recruits regulatory T (T-reg) cells into tumor tissues and is expressed in many human tumors.

## Storage

Storage:

Store at 2 - 8°C. Stable for one year after shipment.

Storage Buffer:

PBS with 0.09% sodium azide, pH7.3

For technical support and original validation data for this product please contact:

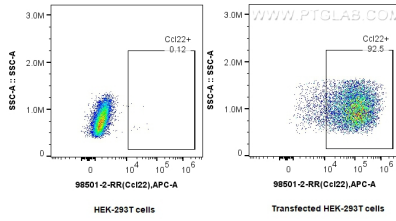
T: 4006900926

E: [Proteintech-CN@ptglab.com](mailto:Proteintech-CN@ptglab.com)

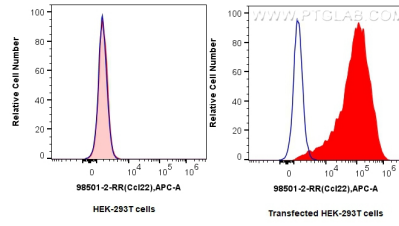
W: [ptgcn.com](http://ptgcn.com)

**This product is exclusively available under Proteintech Group brand and is not available to purchase from any other manufacturer.**

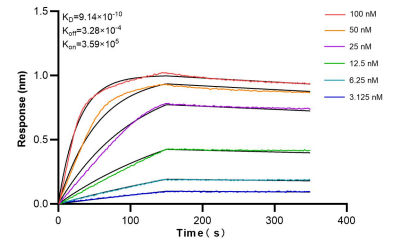
## Selected Validation Data



1x10<sup>6</sup> HEK-293T cells or CCL22/MDC transfected HEK-293T cells were intracellularly stained with 0.25 ug Anti-Mouse CCL22/MDC Rabbit RecAb (98501-2-RR, Clone: 250115D3) and APC-Conjugated Goat Anti-Rabbit IgG(H+L). Cells were fixed with 4% PFA and permeabilized with Flow Cytometry Perm Buffer.



1x10<sup>6</sup> HEK-293T cells or CCL22/MDC transfected HEK-293T cells were intracellularly stained with 0.25 ug Anti-Mouse CCL22/MDC Rabbit RecAb (98501-2-RR, Clone: 250115D3) (red) or 0.25 ug Rabbit IgG Isotype Control RecAb (98136-1-RR, Clone: 240953C9) (blue), and APC-Conjugated Goat Anti-Rabbit IgG(H+L). Cells were fixed with 4% PFA and permeabilized with Flow Cytometry Perm Buffer.



Bi-layer interferometry (BLI) kinetic assays of 98501-2-RR against Mouse CCL22/MDC were performed. The affinity constant is 0.914 nM.