

For Research Use Only

Anti-Mouse CCL22/MDC Rabbit Recombinant Antibody, PBS Only

Catalog Number: 98501-2-PBS



Basic Information

Catalog Number: 98501-2-PBS	GenBank Accession Number: NM_009137	Purification Method: Protein A purification
Concentration: 1mg, 3 mg/ml	GeneID (NCBI): 20299	CloneNo.: 250115D3
Source: Rabbit	UNIPROT ID: O88430	
Isotype: IgG	Full Name: chemokine (C-C motif) ligand 22	
Immunogen Catalog Number: EG2241	Calculated MW: 10kd	

Applications

Tested Applications:
FC (Intra)

Species Specificity:
mouse

Background Information

The C-C motif chemokine ligand 22 (CCL22), also known as MDC, belongs to the group of chemokines, that are both constitutively expressed under homeostatic conditions and inducible upon inflammation. CCL22 is a secreted protein that exerts chemotactic activity for monocytes, dendritic cells, natural killer cells, and for chronically activated T lymphocytes. CCL22 is induced by LPS, IL-4, and IL-13 and in T cells by TCR stimulation. Accumulating studies indicate that CCL22 recruits regulatory T (T-reg) cells into tumor tissues and is expressed in many human tumors.

Storage

Storage:
Store at -80°C.
The product is shipped with ice packs. Upon receipt, store it immediately at -80°C

Storage Buffer:
PBS only, pH7.3

For technical support and original validation data for this product please contact:

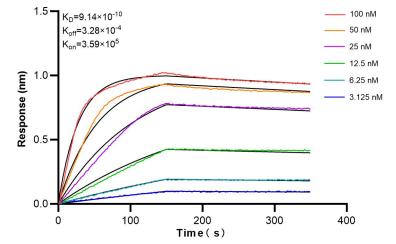
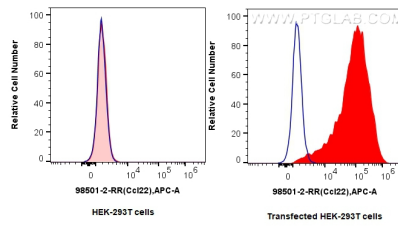
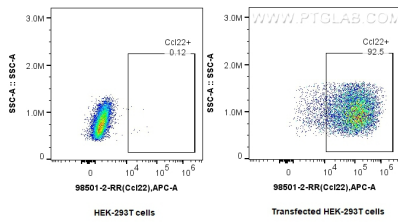
T: 4006900926

E: Proteintech-CN@ptglab.com

W: ptgcn.com

This product is exclusively available under Proteintech Group brand and is not available to purchase from any other manufacturer.

Selected Validation Data



1x10⁶ HEK-293T cells or CCL22/MDC transfected HEK-293T cells were intracellularly stained with 0.25 ug Anti-Mouse CCL22/MDC Rabbit RecAb (98501-2-RR, Clone: 250115D3) and APC-Conjugated Goat Anti-Rabbit IgG(H+L). Cells were fixed with 4% PFA and permeabilized with Flow Cytometry Perm Buffer. This data was developed using the same antibody clone with 98501-2-PBS in a different storage buffer formulation.

1x10⁶ HEK-293T cells or CCL22/MDC transfected HEK-293T cells were intracellularly stained with 0.25 ug Anti-Mouse CCL22/MDC Rabbit RecAb (98501-2-RR, Clone: 250115D3) or 0.25 ug Rabbit IgG Isotype Control RecAb (98136-1-RR, Clone: 240953C9) (blue), and APC-Conjugated Goat Anti-Rabbit IgG(H+L). Cells were fixed with 4% PFA and permeabilized with Flow Cytometry Perm Buffer. This data was developed using the same antibody clone

Bi-layer interferometry (BLI) kinetic assays of 98501-2-RR against Mouse CCL22/MDC were performed. The affinity constant is 0.914 nM.