

For Research Use Only

Anti-Human IGSF2/CD101 Rabbit Recombinant Antibody

Catalog Number: 98494-1-RR



Basic Information

Catalog Number:

98494-1-RR

Concentration:

100ug, 1000 μ g/ml

Source:

Rabbit

Isotype:

IgG

Immunogen Catalog Number:

EG3583

GenBank Accession Number:

NM_001256106.2

GeneID (NCBI):

9398

UNIPROT ID:

Q93033

Full Name:

immunoglobulin superfamily,
member 2

Calculated MW:

115 kDa

Purification Method:

Protein A purification

CloneNo.:

250504D4

Recommended Dilutions:

FC: 0.25 ug per 10^6 cells in a 100 μ l
suspension

Applications

Tested Applications:

FC

Species Specificity:

human

Positive Controls:

FC : human peripheral blood leukocytes,

Background Information

IGSF2, also known as CD101, is a low abundance protein. Expression of CD101 is found on monocytes, granulocytes and dendritic cells. In addition expression on T lymphocytes is important for cell activation. It plays a role as inhibitor of T-cells proliferation induced by CD3 and inhibits expression of IL2RA on activated T-cells and secretion of IL2.

Storage

Storage:

Store at 2 - 8°C. Stable for one year after shipment.

Storage Buffer:

PBS with 0.09% sodium azide, pH7.3

For technical support and original validation data for this product please contact:

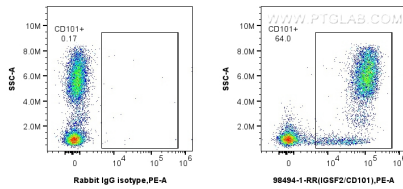
T: 4006900926

E: Proteintech-CN@ptglab.com

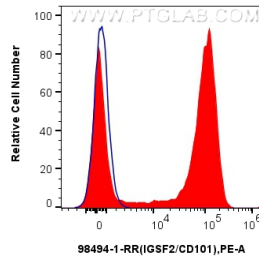
W: ptgcn.com

This product is exclusively available under Proteintech Group brand and is not available to purchase from any other manufacturer.

Selected Validation Data



1x10⁶ human peripheral blood leukocytes were surface stained with 0.25 ug Anti-Human IGSF2/CD101 Rabbit RecAb (98494-1-RR, Clone: 250504D4) or 0.25 ug Rabbit IgG Isotype Control RecAb (98136-1-RR, Clone: 240953C9), and PE-Conjugated Goat Anti-Rabbit IgG(H+L). Cells were not fixed.



1x10⁶ human peripheral blood leukocytes were surface stained with 0.25 ug Anti-Human IGSF2/CD101 Rabbit RecAb (98494-1-RR, Clone: 250504D4) (red) or 0.25 ug Rabbit IgG Isotype Control RecAb (98136-1-RR, Clone: 240953C9) (blue), and PE-Conjugated Goat Anti-Rabbit IgG(H+L). Cells were not fixed.