

For Research Use Only

# Anti-Mouse Podoplanin Rabbit Recombinant Antibody, PBS Only

Catalog Number: 98492-3-PBS



## Basic Information

Catalog Number:

98492-3-PBS

Concentration:

1mg, 3 mg/ml

Source:

Rabbit

Isotype:

IgG

Immunogen Catalog Number:

EG2861

GenBank Accession Number:

NM\_010329.3

GeneID (NCBI):

14726

UNIPROT ID:

Q62011

Full Name:

podoplanin

Calculated MW:

18 kDa

Purification Method:

Protein A purification

CloneNo.:

250618A2

## Applications

Tested Applications:

FC

Species Specificity:

mouse

## Background Information

Podoplanin was identified as a glycoprotein found in the cell membranes of glomerular epithelial cells (podocyte) (PMID: 9327748). It is a lymphatic marker because the expression of podoplanin has been detected in lymphatic but not blood vascular endothelium, and is useful as the marker of tumor-associated lymphangiogenesis. Podoplanin has a function in developing testis, most likely at the level of cell-cell interactions among pre-meiotic germ cells and immature Sertoli cells. It may be involved in cell migration and/or actin cytoskeleton organization. When expressed in keratinocytes, Podoplanin induces changes in cell morphology with transfected cells showing an elongated shape, numerous membrane protrusions, major reorganization of the actin cytoskeleton, increased motility and decreased cell adhesion. It is required for normal lung cell proliferation and alveolus formation at birth. Podoplanin induces platelet aggregation. It does not have any effect on folic acid or amino acid transport and does not function as a water channel or as a regulator of aquaporin-type water channels.

## Storage

Storage:

Store at -80°C.

The product is shipped with ice packs. Upon receipt, store it immediately at -80°C

Storage Buffer:

PBS only, pH7.3

For technical support and original validation data for this product please contact:

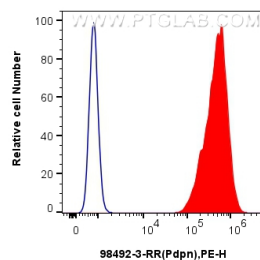
T: 4006900926

E: [Proteintech-CN@ptglab.com](mailto:Proteintech-CN@ptglab.com)

W: [ptgcn.com](http://ptgcn.com)

This product is exclusively available under Proteintech Group brand and is not available to purchase from any other manufacturer.

## Selected Validation Data



$1 \times 10^6$  C2C12 cells were surface stained with 0.25  $\mu$ g Anti-Mouse Podoplanin Rabbit RecAb (98492-3-RR, Clone: 250618A2) (red) or 0.25  $\mu$ g Rabbit IgG Isotype Control RecAb (98136-1-RR, Clone: 240953C9) (blue), and PE-Conjugated Goat Anti-Rabbit IgG(H+L). Cells were not fixed. This data was developed using the same antibody clone with 98492-3-PBS in a different storage buffer formulation.