

For Research Use Only

Anti-Mouse ENPEP Rabbit Recombinant Antibody

Catalog Number: 98489-3-RR



Basic Information

Catalog Number:

98489-3-RR

Concentration:

100ug, 1000 µg/ml

Source:

Rabbit

Isotype:

IgG

Immunogen Catalog Number:

EG4233

GenBank Accession Number:

NM_007934.3

GeneID (NCBI):

13809

UNIPROT ID:

P16406

Full Name:

glutamyl aminopeptidase

Calculated MW:

108 kDa

Purification Method:

Protein A purification

CloneNo.:

250659C1

Recommended Dilutions:

FC: 0.25 ug per 10⁶ cells in a 100 µl suspension

Applications

Tested Applications:

FC

Species Specificity:

mouse

Positive Controls:

FC : mouse bone marrow cells,

Background Information

ENPEP is the gene encoding the protein glutamyl aminopeptidase, also known as aminopeptidase A (APA), human kidney differentiation antigen (gp160). A type 2 membrane zinc metalloenzyme, APA is a general-purpose protease that primarily serves to cleave the acidic N-terminal aspartate and glutamyl residues of a variety of peptides, most significantly angiotensin 2 (ANG2, ang1-8), cholecystokinin-8 (CCK8), and neurokinin A. The presence of Ca²⁺ augments both the enzymatic efficiency and specificity of APA, increasing its selectivity towards the aforementioned acidic amino acids. Conversely, in the absence of calcium, APA can bind a wider range of N-terminal neutral and basic amino acids, some of which are cleaved, while others bind without proteolysis.

Storage

Storage:

Store at 2 - 8°C. Stable for one year after shipment.

Storage Buffer:

PBS with 0.09% sodium azide, pH7.3

For technical support and original validation data for this product please contact:

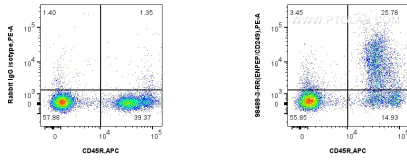
T: 4006900926

E: Proteintech-CN@ptglab.com

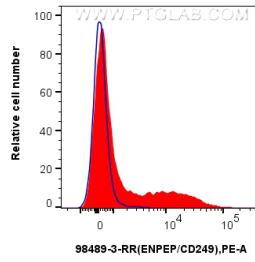
W: ptgcn.com

This product is exclusively available under Proteintech Group brand and is not available to purchase from any other manufacturer.

Selected Validation Data



1x10⁶ mouse bone marrow cells were surface stained with 0.25 ug Anti-Mouse ENPEP Rabbit RecAb (98489-3-RR, Clone:250659C1) or 0.25 ug Rabbit IgG Isotype Control RecAb (98136-1-RR, Clone: 240953C9), and PE-conjugated Goat Anti-Mouse CD45R. Cells were then stained with APC Anti-Mouse CD45R. Cells were not fixed.



1x10⁶ mouse bone marrow cells were surface stained with 0.25 ug Anti-Mouse ENPEP Rabbit RecAb (98489-3-RR, Clone: 250659C1) (red) or 0.25 ug Rabbit IgG Isotype Control RecAb (98136-1-RR, Clone: 240953C9) (blue), and PE-conjugated Goat Anti-Rabbit IgG. Cells were then stained with APC Anti-Mouse CD45R. Cells were not fixed.