

For Research Use Only

# Anti-Rat CD8a Rabbit Recombinant Antibody, PBS Only

Catalog Number: 98484-2-PBS



## Basic Information

Catalog Number: 98484-2-PBS	GenBank Accession Number: NM_031538.2	Purification Method: Protein A purification
Concentration: 1mg, 3 mg/ml	GeneID (NCBI): 24930	CloneNo.: 250721G1
Source: Rabbit	UNIPROT ID: P07725	
Isotype: IgG	Full Name: CD8a molecule	
Immunogen Catalog Number: EG3839	Calculated MW: 26 kDa	

## Applications

Tested Applications:  
FC

Species Specificity:  
rat

## Background Information

CD8 is a transmembrane glycoprotein composed of two disulfide-linked chains. It can be present as a homodimer of CD8  $\alpha$  or as a heterodimer of CD8  $\alpha$  and CD8  $\beta$  (PMID: 3264320; 8253791). CD8 is found on most thymocytes. The majority of class I-restricted T cells express mostly the CD8  $\alpha$   $\beta$  heterodimer while CD8  $\alpha$   $\alpha$  homodimers alone have been found on some gut intraepithelial T cells, on some T cell receptor (TCR)  $\gamma$   $\delta$  T cells and on NK cells (PMID: 2111591; 1831127; 8420975). CD8 acts as a co-receptor that binds to MHC class-I and participates in cytotoxic T cell activation (PMID: 8499079). During T cell development, CD8 is required for positive selection of CD4-/CD8+ T cells (PMID: 1968084).

## Storage

Storage:  
Store at -80°C.  
**The product is shipped with ice packs. Upon receipt, store it immediately at -80°C**

Storage Buffer:  
PBS only, pH7.3

For technical support and original validation data for this product please contact:

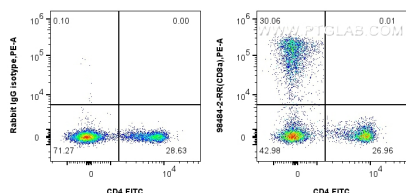
T: 4006900926

E: Proteintech-CN@ptglab.com

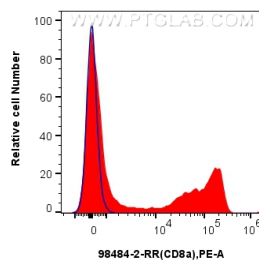
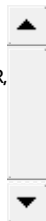
W: ptgcn.com

**This product is exclusively available under Proteintech Group brand and is not available to purchase from any other manufacturer.**

## Selected Validation Data



1x10<sup>6</sup> rat splenocytes were surface stained with 0.25 ug Anti-Rat CD8a Rabbit RecAb (98484-2-RR, Clone:250721G1) or 0.25 ug Rabbit IgG Isotype Control RecAb (98136-1-RR, Clone: 240953C9), and PE-Conjugated Goat Anti-Rabbit IgG(H+L). Cells were then stained with FITC Plus Anti-Rat CD4 (OX-35) (FITC-65179, Clone: OX-35). Cells were not fixed. This data was developed using the same antibody clone with 98484-2-PBS in a different storage buffer formulation.



1x10<sup>6</sup> rat splenocytes were surface stained with 0.25 ug Anti-Rat CD8a Rabbit RecAb (98484-2-RR, Clone: 250721G1) (red) or 0.25 ug Rabbit IgG Isotype Control RecAb (98136-1-RR, Clone: 240953C9) (bue), and PE-Conjugated Goat Anti-Rabbit IgG(H+L). Cells were not fixed. This data was developed using the same antibody clone with 98484-2-PBS in a different storage buffer formulation.