

For Research Use Only

Anti-Human CD206 Rabbit Recombinant Antibody, PBS Only

Catalog Number: 98458-3-PBS



Basic Information

Catalog Number: 98458-3-PBS	GenBank Accession Number: NM_002438.4	Purification Method: Protein A purification
Concentration: 1mg, 3000 µg/ml	GeneID (NCBI): 4360	CloneNo.: 250381C1
Source: Rabbit	UNIPROT ID: P22897-1	
Isotype: IgG	Full Name: mannose receptor, C type 1	
Immunogen Catalog Number: EG2428	Calculated MW: 166 kDa	

Applications

Tested Applications:
FC

Species Specificity:
human

Background Information

CD206, also named as MMR, CLEC13D and MRC1, is a type I membrane receptor that mediates the endocytosis of glycoproteins by macrophages. CD206 has been shown to bind high-mannose structures on the surface of potentially pathogenic viruses, bacteria, and fungi so that they can be neutralized by phagocytic engulfment. CD206 is a 170 kDa transmembrane protein which contains 5 domains: an amino-terminal cysteine-rich region, a fibronectin type II repeat, a series of eight tandem lectin-like carbohydrate recognition domains (responsible for the recognition of mannose and fucose), a transmembrane domain, and an intracellular carboxy-terminal tail. It is expressed on most tissue macrophages, in vitro derived dendritic cells, lymphatic and sinusoidal endothelia.

Storage

Storage:
Store at -80°C.
The product is shipped with ice packs. Upon receipt, store it immediately at -80°C

Storage Buffer:
PBS only, pH7.3

For technical support and original validation data for this product please contact:

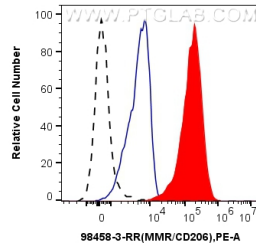
T: 4006900926

E: Proteintech-CN@ptglab.com

W: ptgcn.com

This product is exclusively available under Proteintech Group brand and is not available to purchase from any other manufacturer.

Selected Validation Data



1x10⁶ GM-CSF, IL-4, and IL-10 treated human PBMCs were surface stained with 0.25 ug Anti-Human MMR/CD206 Rabbit RecAb (98458-3-RR, Clone: 250381C1) (red) or Rabbit IgG Isotype Control RecAb (98136-1-RR, Clone: 240953C9) (blue), and PE-Conjugated Goat Anti-Rabbit IgG(H+L). 1x10⁶ untreated human PBMCs were surface stained with 0.25 ug Anti-Human MMR/CD206 Rabbit RecAb (98458-3-RR, Clone: 250381C1) (black, dashed) and PE-Conjugated Goat Anti-Rabbit