

For Research Use Only

Anti-Mouse CD37 Rabbit Recombinant Antibody, PBS Only

Catalog Number: 98443-1-PBS



Basic Information

Catalog Number: 98443-1-PBS	GenBank Accession Number: NM_007645.4	Purification Method: Protein A purification
Concentration: 1mg, 3 mg/ml	GeneID (NCBI): 12493	CloneNo.: 250262E4
Source: Rabbit	UNIPROT ID: Q61470	
Isotype: IgG	Full Name: CD37 antigen	
Immunogen Catalog Number: EG2729	Calculated MW: 32 kDa	

Applications

Tested Applications:
FC

Species Specificity:
mouse

Background Information

CD37 is a membrane protein of the tetraspanin superfamily which are characterized by the presence of four conserved transmembrane regions. Many of these members are expressed on leukocytes and have been implicated in signal transduction, cell-cell interactions, and cellular activation and development. CD37 plays a role in B-cell function, and may also play a role in T-cell-B-cell interactions (PMID: 10891477).

Storage

Storage:
Store at -80°C.
The product is shipped with ice packs. Upon receipt, store it immediately at -80°C

Storage Buffer:
PBS only, pH7.3

For technical support and original validation data for this product please contact:

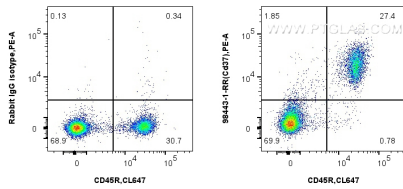
T: 4006900926

E: Proteintech-CN@ptglab.com

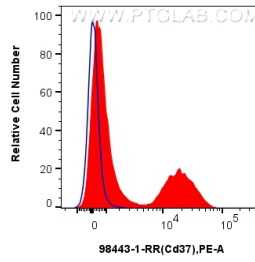
W: ptgcn.com

This product is exclusively available under Proteintech Group brand and is not available to purchase from any other manufacturer.

Selected Validation Data



1x10⁶ mouse splenocytes were surface stained with 0.25 ug Anti-Mouse CD37 Rabbit RecAb (98443-1-RR, Clone: 250262E4) or 0.25 ug Rabbit IgG Isotype Control RecAb (98136-1-RR, Clone: 240953C9), and PE-Conjugated Goat Anti-Rabbit IgG(H+L). Cells were then stained with CoraLite® Plus 647 Anti-Mouse CD45R (B220) (RA3-6B2) (CL647-65139, Clone: RA3-6B2). Cells were not fixed. This data was developed using the same antibody clone with 98443-1-PBS in a different storage buffer



1x10⁶ mouse splenocytes were surface stained with 0.25 ug Anti-Mouse CD37 Rabbit RecAb (98443-1-RR, Clone: 250262E4) (red) or 0.25 ug Rabbit IgG Isotype Control RecAb (98136-1-RR, Clone: 240953C9) (blue), and PE-Conjugated Goat Anti-Rabbit IgG(H+L). Cells were not fixed. This data was developed using the same antibody clone with 98443-1-PBS in a different storage buffer formulation.