

For Research Use Only

# Anti-Mouse Beta-2-Microglobulin Rabbit Recombinant Antibody

Catalog Number: 98442-2-RR



## Basic Information

Catalog Number:

98442-2-RR

Concentration:

100ug, 1000 µg/ml

Source:

Rabbit

Isotype:

IgG

Immunogen Catalog Number:

EG3086

GenBank Accession Number:

NM\_009735.3

GeneID (NCBI):

12010

UNIPROT ID:

P01887

Full Name:

beta-2 microglobulin

Calculated MW:

14 kDa

Purification Method:

Protein A purification

CloneNo.:

250172F11

Recommended Dilutions:

FC: 0.25 ug per 10<sup>6</sup> cells in a 100 µl suspension

## Applications

Tested Applications:

FC

Species Specificity:

mouse

Positive Controls:

FC : mouse splenocytes,

## Background Information

Beta-2-microglobulin (B2M) is a component of MHC class I molecules, which are present on the surface of nearly all nucleated cells. It can be found in body fluids under physiologic conditions due to shedding from cell surfaces or intracellular release. B2M has various biological functions, including antigen presentation. Investigations reveal that increased synthesis and release of B2M are present in several malignant diseases.

## Storage

Storage:

Store at 2 - 8°C. Stable for one year after shipment.

Storage Buffer:

PBS with 0.09% sodium azide, pH7.3

For technical support and original validation data for this product please contact:

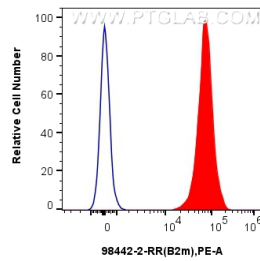
T: 4006900926

E: [Proteintech-CN@ptglab.com](mailto:Proteintech-CN@ptglab.com)

W: [ptgcn.com](http://ptgcn.com)

This product is exclusively available under Proteintech Group brand and is not available to purchase from any other manufacturer.

## Selected Validation Data



$1 \times 10^6$  mouse splenocytes were surface stained with 0.25  $\mu$ g Anti-Mouse Beta-2-Microglobulin Rabbit RecAb (98442-2-RR, Clone: 250172F11) or 0.25  $\mu$ g Rabbit IgG Isotype Control RecAb (98136-1-RR, Clone: 240953C9) (blue), and PE-Conjugated Goat Anti-Rabbit IgG(H+L)(red). Cells were not fixed.