

For Research Use Only

# Anti-Mouse CD38 Rabbit Recombinant Antibody, PBS Only

Catalog Number: 98433-3-PBS



## Basic Information

<b>Catalog Number:</b> 98433-3-PBS	<b>GenBank Accession Number:</b> NM_007646.5	<b>Purification Method:</b> Protein A purification
<b>Concentration:</b> 1mg, 2 mg/ml	<b>GeneID (NCBI):</b> 12494	<b>CloneNo.:</b> 250107D11
<b>Source:</b> Rabbit	<b>UNIPROT ID:</b> P56528	
<b>Isotype:</b> IgG	<b>Full Name:</b> CD38 antigen	
<b>Immunogen Catalog Number:</b> EG2915	<b>Calculated MW:</b> 34 kDa	

## Applications

**Tested Applications:**  
FC

**Species Specificity:**  
mouse

## Background Information

CD38, also known as ADP-ribosyl cyclase 1, is a type II transmembrane glycoprotein with a short N-terminal cytoplasmic tail, a single membrane-spanning domain, and a C-terminal extracellular region with four N-glycosylation sites (PMID: 2319135). The extracellular domain of CD38 has bifunctional enzyme activities that catalyze synthesis of cyclic ADP ribose from nicotinamide adenine dinucleotide (NAD) and hydrolysis of cyclic ADP ribose to adenosine diphosphoribose (PMID: 10636863). CD38 is expressed on a variety of hematopoietic and non-hematopoietic cells and is involved in diverse processes such as generation of calcium-mobilizing metabolites, cell activation, and chemotaxis (PMID: 25938500).

## Storage

**Storage:**  
Store at -80°C.  
**The product is shipped with ice packs. Upon receipt, store it immediately at -80°C**

**Storage Buffer:**  
PBS only, pH7.3

For technical support and original validation data for this product please contact:

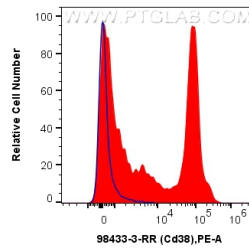
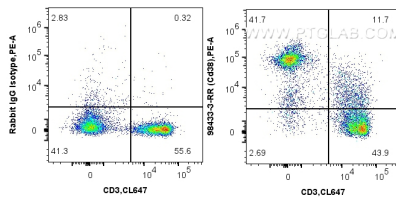
T: 4006900926

E: [Proteintech-CN@ptglab.com](mailto:Proteintech-CN@ptglab.com)

W: [ptgcn.com](http://ptgcn.com)

**This product is exclusively available under Proteintech Group brand and is not available to purchase from any other manufacturer.**

## Selected Validation Data



$1 \times 10^6$  C57BL/6 mouse splenocytes were surface stained with 0.25  $\mu$ g Anti-Mouse Cd38 Rabbit RecAb (98433-3-RR, Clone:250107D11) or Rabbit IgG Isotype Control RecAb (98136-1-RR, Clone: 240953C9), and PE-Conjugated Goat Anti-Rabbit IgG(H+L). Cells were co-stained with CoraLite® Plus 647 Anti-Mouse CD3. Cells were not fixed. This data was developed using the same antibody clone with 98433-3-PBS in a different storage buffer formulation.

$1 \times 10^6$  C57BL/6 mouse splenocytes were surface stained with 0.25  $\mu$ g Anti-Mouse Cd38 Rabbit RecAb (98433-3-RR, Clone: 250107D11) (red) or Rabbit IgG Isotype Control RecAb (98136-1-RR, Clone: 240953C9) (blue), and PE-Conjugated Goat Anti-Rabbit IgG(H+L). Cells were not fixed. This data was developed using the same antibody clone with 98433-3-PBS in a different storage buffer formulation.