

For Research Use Only

Anti-Human Siglec-6/CD327 Rabbit Recombinant Antibody, PBS Only

Catalog Number: 98416-1-PBS



Basic Information

Catalog Number: 98416-1-PBS	GenBank Accession Number: BC035359	Purification Method: Protein A purification
Concentration: 1mg, 2 mg/ml	GeneID (NCBI): 946	CloneNo.: 243088G2
Source: Rabbit	UNIPROT ID: O43699	
Isotype: IgG	Full Name: sialic acid binding Ig-like lectin 6	
Immunogen Catalog Number: EG2070	Calculated MW: 426 aa, 47 kDa	

Applications

Tested Applications:
FC

Species Specificity:
human

Background Information

Siglec-6, also known as CD327, originally identified on trophoblast cells of the placenta, is highly and consistently expressed on MCs from both mucosal and non-mucosal sites. Siglec-6 consists of 3 extracellular immunoglobulin (Ig) domains and 2 intracellular immunoreceptor tyrosine-based inhibition motifs (ITIMs), closely resembling the molecular structure of Siglec-3 (CD33) (PMID: 34289026). Siglec-6 was recruited to placental expression during human evolution, presumably to interact with sialylated ligands for specific negative signaling functions and/or to regulate leptin availability (PMID: 17580316). Siglec-6 is an immunoreceptor tyrosine-based inhibitory motif (ITIM)-bearing receptor selectively expressed by mast cells, making it a promising target for therapeutic intervention (PMID: 35406705).

Storage

Storage:
Store at -80°C.
The product is shipped with ice packs. Upon receipt, store it immediately at -80°C
Storage Buffer:
PBS only, pH7.3

For technical support and original validation data for this product please contact:

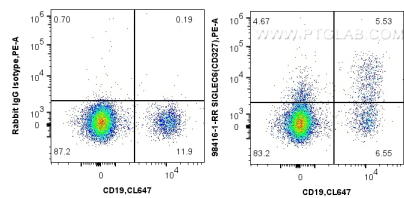
T: 4006900926

E: Proteintech-CN@ptglab.com

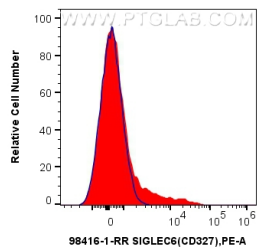
W: ptgcn.com

This product is exclusively available under Proteintech Group brand and is not available to purchase from any other manufacturer.

Selected Validation Data



1x10⁶ human PBMCs were surface stained with 0.25 ug Anti-Human Siglec-6/CD327 Rabbit RecAb (98416-1-RR, Clone: 243088G2) or Rabbit IgG Isotype Control RecAb (98136-1-RR, Clone: 240953C9), and PE-Conjugated Goat Anti-Rabbit IgG(H+L). Cells were co-stained with CoraLite® Plus 647 Anti-Human CD19. Cells were not fixed. Lymphocytes were gated. This data was developed using the same antibody clone with 98416-1-PBS in a different storage buffer formulation.



1x10⁶ human PBMCs were surface stained with 0.25 ug Anti-Human Siglec-6/CD327 Rabbit RecAb (98416-1-RR, Clone: 243088G2) (red) or Rabbit IgG Isotype Control RecAb (98136-1-RR, Clone: 240953C9) (blue), and PE-Conjugated Goat Anti-Rabbit IgG(H+L). Cells were not fixed. Lymphocytes were gated. This data was developed using the same antibody clone with 98416-1-PBS in a different storage buffer formulation.