

For Research Use Only

# Anti-Human CRLF2 Rabbit Recombinant Antibody

Catalog Number: 98415-1-RR



## Basic Information

Catalog Number:

98415-1-RR

Concentration:

100ug, 1000 µg/ml

Source:

Rabbit

Isotype:

IgG

Immunogen Catalog Number:

EG2626

GenBank Accession Number:

NM\_022148.3

GeneID (NCBI):

64109

UNIPROT ID:

Q9HC73

Full Name:

cytokine receptor-like factor 2

Calculated MW:

42 kDa

Purification Method:

Protein A purification

CloneNo.:

243090E1

Recommended Dilutions:

FC: 0.25 ug per 10<sup>6</sup> cells in a 100 µl suspension

## Applications

Tested Applications:

FC

Species Specificity:

human

Positive Controls:

FC : human monocyte-derived mature dendritic cells, CRLF2-transfected CHO cells

## Background Information

Cytokine receptor-like factor 2 (CRLF2), also known as the thymic stromal derived lymphopoietin receptor (TSLPR), which in combination with the interleukin 7 receptor alpha chain (IL-7R) forms the receptor for thymic stromal lymphopoietin. CRLF2 is a type I cytokine receptor. CRLF2 rearrangements occur either as a translocation to the immunoglobulin heavy-chain enhancer region (IGH-CRLF2) or by a deletion of upstream PAR1 that leads to joining of CRLF2 to adjacent P2RY8. CRLF2 is expressed in heart, skeletal muscle, kidney and adult and fetal liver and is primarily expressed in dendrites and monocytes. (PMID: 20807819; 31644323; 33485429)

## Storage

Storage:

Store at 2 - 8°C. Stable for one year after shipment.

Storage Buffer:

PBS with 0.09% sodium azide, pH7.3

For technical support and original validation data for this product please contact:

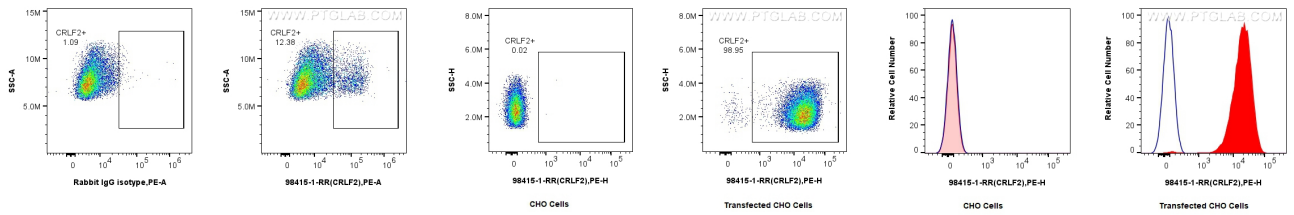
T: 4006900926

E: [Proteintech-CN@ptglab.com](mailto:Proteintech-CN@ptglab.com)

W: [ptgcn.com](http://ptgcn.com)

**This product is exclusively available under Proteintech Group brand and is not available to purchase from any other manufacturer.**

## Selected Validation Data



1x10<sup>6</sup> human monocyte-derived mature dendritic cells were surface stained with 0.25 ug Anti-Human CRLF2 Rabbit RecAb (98415-1-RR, Clone: 243090E1) or 0.25 ug Rabbit IgG Isotype Control RecAb (98136-1-RR, Clone: 240953C9), and PE-Conjugated Goat Anti-Rabbit IgG(H+L). Cells were incubated with FC Receptor Block prior to staining. Cells were not fixed.

1x10<sup>6</sup> CHO cells or CRLF2-transfected CHO cells were surface stained with 0.25 ug Anti-Human CRLF2 Rabbit RecAb (98415-1-RR, Clone: 243090E1) and PE-Conjugated Goat Anti-Rabbit IgG(H+L). Cells were not fixed.

1x10<sup>6</sup> CHO cells or CRLF2-transfected CHO cells were surface stained with 0.25 ug Anti-Human CRLF2 Rabbit RecAb (98415-1-RR, Clone: 243090E1) (red) or 0.25 ug Rabbit IgG Isotype Control RecAb (98136-1-RR, Clone: 240953C9) (blue), and PE-Conjugated Goat Anti-Rabbit IgG(H+L). Cells were not fixed.