

For Research Use Only

# Anti-Human DcR2 Rabbit Recombinant Antibody, PBS Only

Catalog Number: 98412-2-PBS



## Basic Information

Catalog Number:

98412-2-PBS

Concentration:

1mg, 2 mg/ml

Source:

Rabbit

Isotype:

IgG

Immunogen Catalog Number:

EG3487

GenBank Accession Number:

NM\_003840.5

GeneID (NCBI):

8793

UNIPROT ID:

Q9UBN6

Full Name:

tumor necrosis factor receptor  
superfamily, member 10d, decoy with  
truncated death domain

Calculated MW:

42 kDa

Purification Method:

Protein A purification

CloneNo.:

242916D5

## Applications

Tested Applications:

FC

Species Specificity:

human

## Background Information

Decoy receptor 2 (DcR2) is a member of the tumor necrosis factor receptor (TNFR) superfamily. It functions as a decoy receptor for TNF-related apoptosis-inducing ligand (TRAIL), thereby inhibiting TRAIL-mediated apoptosis (PMID: 15538968; 9537512). It has been considered a tentative marker of cellular senescence (PMID: 16079833; 22751116). Additionally, DCR2 has been implicated in the regulation of renal fibrosis and cell senescence, contributing to the pathogenesis of diabetic nephropathy (PMID: 35661704).

## Storage

Storage:

Store at -80°C.

**The product is shipped with ice packs. Upon receipt, store it immediately at -80°C**

Storage Buffer:

PBS only, pH7.3

For technical support and original validation data for this product please contact:

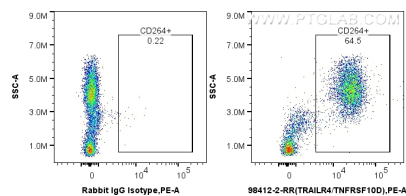
T: 4006900926

E: [Proteintech-CN@ptglab.com](mailto:Proteintech-CN@ptglab.com)

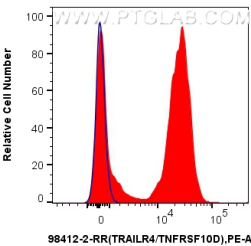
W: [ptgcn.com](http://ptgcn.com)

**This product is exclusively available under Proteintech Group brand and is not available to purchase from any other manufacturer.**

Selected Validation Data



1x10<sup>6</sup> human peripheral blood leukocytes were surface stained with 0.25 ug Anti-Human DcR2 Rabbit RecAb (98412-2-RR, Clone: 242916D5) or 0.25 ug Rabbit IgG Isotype Control RecAb (98136-1-RR, Clone: 240953C9), and PE-Conjugated Goat Anti-Rabbit IgG(H+L). Cells were incubated with FC Receptor Block prior to staining. Cells were not fixed. This data was developed using the same antibody clone with 98412-2-PBS in a different storage buffer formulation.



1x10<sup>6</sup> human peripheral blood leukocytes were surface stained with 0.25 ug Anti-Human DcR2 Rabbit RecAb (98412-2-RR, Clone: 242916D5) (red) or 0.25 ug Rabbit IgG Isotype Control RecAb (98136-1-RR, Clone: 240953C9) (blue), and PE-Conjugated Goat Anti-Rabbit IgG(H+L). Cells were incubated with FC Receptor Block prior to staining. Cells were not fixed. This data was developed using the same antibody clone with 98412-2-PBS in a different storage buffer formulation.