

For Research Use Only

# Anti-Human S100A8 Rabbit Recombinant Antibody, PBS Only

Catalog Number: 98411-3-PBS



## Basic Information

Catalog Number:

98411-3-PBS

Concentration:

1mg, 2 mg/ml

Source:

Rabbit

Isotype:

IgG

Immunogen Catalog Number:

EG3752

GenBank Accession Number:

BC005928

GeneID (NCBI):

6279

UNIPROT ID:

P05109

Full Name:

S100 calcium binding protein A8

Calculated MW:

93 aa, 11 kDa

Purification Method:

Protein A purification

CloneNo.:

242970C4

## Applications

Tested Applications:

FC (Intra)

Species Specificity:

human

## Background Information

S100A8 is a member of the S100 family of proteins containing 2 EF-hand calcium-binding motifs. S100 proteins are localized in the cytoplasm and/or nucleus of a wide range of cells, and involved in the regulation of a number of cellular processes such as cell cycle progression and differentiation. S100 genes include at least 13 members which are located as a cluster on chromosome 1q21. This protein may function in the inhibition of casein kinase and as a cytokine.

## Storage

Storage:

Store at -80°C.

The product is shipped with ice packs. Upon receipt, store it immediately at -80°C

Storage Buffer:

PBS only, pH7.3

For technical support and original validation data for this product please contact:

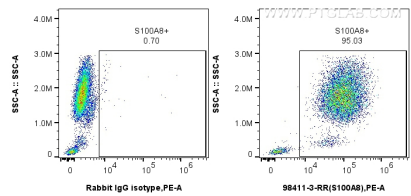
T: 4006900926

E: [Proteintech-CN@ptglab.com](mailto:Proteintech-CN@ptglab.com)

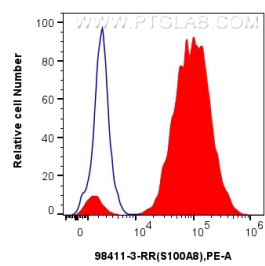
W: [ptgcn.com](http://ptgcn.com)

This product is exclusively available under Proteintech Group brand and is not available to purchase from any other manufacturer.

Selected Validation Data



1x10<sup>6</sup> human peripheral blood lymphocytes were intracellularly stained with 0.25 ug Anti-Human S100A8 Rabbit RecAb (98411-3-RR, Clone: 242970C4), or 0.25 ug Rabbit IgG Isotype Control RecAb (98136-1-RR, Clone: 240953C9), and PE-Conjugated Goat Anti-Rabbit IgG(H+L). Cells were incubated with FC Receptor Block prior to staining. Cells were fixed with 4% PFA and permeabilized with Flow Cytometry Perm Buffer (PF00011-C). This data was developed using the same



1x10<sup>6</sup> human peripheral blood lymphocytes were intracellularly stained with 0.25 ug Anti-Human S100A8 Rabbit RecAb (98411-3-RR, Clone: 242970C4) (red) or 0.25 ug Rabbit IgG Isotype Control RecAb (98136-1-RR, Clone: 240953C9) (blue), and PE-Conjugated Goat Anti-Rabbit IgG(H+L). Cells were incubated with FC Receptor Block prior to staining. Cells were fixed with 4% PFA and permeabilized with Flow Cytometry Perm Buffer (PF00011-C). This data was developed using the same