

For Research Use Only

Anti-Mouse IL-15RA Rabbit Recombinant Antibody

Catalog Number: 98406-2-RR



Basic Information

Catalog Number: 98406-2-RR	GenBank Accession Number: NM_008358.2	Purification Method: Protein A purification
Concentration: 100ug, 1000 µg/ml	GeneID (NCBI): 16169	CloneNo.: 242618B9
Source: Rabbit	UNIPROT ID: Q60819-1	
Isotype: IgG	Full Name: interleukin 15 receptor, alpha chain	
Immunogen Catalog Number: EG2687	Calculated MW: 28 kDa	

Applications

Tested Applications:
FC

Species Specificity:
mouse

Background Information

Interleukin-15 (IL-15) is a pleiotropic cytokine that plays an important role in both innate and adaptive immunity. IL-15 is mainly produced by activated monocytes, macrophages and dendritic cells, and is structurally similar to IL-2 (PMID: 8178155; 12401478). These two cytokines share the same IL-2/15R β and common γ -chain receptor subunits. In addition, IL-2 and IL-15 have their own private α -chain receptor subunit, IL-2R α and IL-15R α , respectively (PMID: 7641685). The IL-15R α chain is expressed by many cell types including monocytes, DCs, NK, T cells and fibroblasts. Several isoforms of IL-15R α exist and are generated either by alternative splicing or by proteolytic cleavage (PMID: 10480910; 15265897).

Storage

Storage:
Store at 2 - 8°C. Stable for one year after shipment.

Storage Buffer:
PBS with 0.09% sodium azide, pH7.3

For technical support and original validation data for this product please contact:

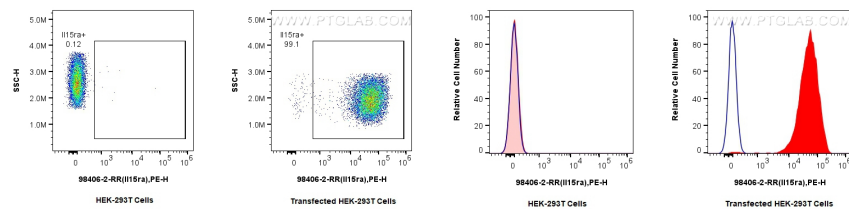
T: 4006900926

E: Proteintech-CN@ptglab.com

W: ptgcn.com

This product is exclusively available under Proteintech Group brand and is not available to purchase from any other manufacturer.

Selected Validation Data



1x10⁶ HEK-293T cells or IL-15RA transfected HEK-293T cells were surface stained with 0.25 ug Anti-Mouse IL-15RA Rabbit RecAb (98406-2-RR, Clone: 242618B9) and PE-Conjugated Goat Anti-Rabbit IgG(H+L). Cells were not fixed.

1x10⁶ HEK-293T cells or IL-15RA-transfected HEK-293T cells were surface stained with 0.25 ug Anti-Mouse IL-15RA Rabbit RecAb (98406-2-RR, Clone: 242618B9) and PE-Conjugated Goat Anti-Rabbit IgG(H+L) (red) or 0.25 ug Rabbit IgG Isotype Control RecAb (98136-1-RR, Clone: 240953C9) (blue). Cells were not fixed.