

For Research Use Only

# Anti-Human PDGFR beta/CD140b Rabbit Recombinant Antibody, PBS Only

Catalog Number: 98405-2-PBS



## Basic Information

<b>Catalog Number:</b> 98405-2-PBS	<b>GenBank Accession Number:</b> BC032224	<b>Purification Method:</b> Protein A purification
<b>Concentration:</b> 1mg, 2 mg/ml	<b>GeneID (NCBI):</b> 5159	<b>CloneNo.:</b> 242711A9
<b>Source:</b> Rabbit	<b>UNIPROT ID:</b> P09619	
<b>Isotype:</b> IgG	<b>Full Name:</b> platelet-derived growth factor receptor, beta polypeptide	
<b>Immunogen Catalog Number:</b> EG3715	<b>Calculated MW:</b> 1106 aa, 124 kDa	

## Applications

**Tested Applications:**  
FC

**Species Specificity:**  
human

## Background Information

PDGFRs are receptor tyrosine kinases with an extracellular ligand-binding domain and a cytoplasmic enzymatic domain. The signaling activity of PDGFRs is tightly regulated by an autoinhibitory allosteric conformation, and requires ligand-induced receptor dimerization at the cell surface to alleviate autoinhibition and achieve physiological activity (PMID: 21664579). PDGFR beta (platelet-derived growth factor receptor- $\beta$ )/CD140b is a constitutive marker expressed by ASCs in the angiogenic behavior of human retinal endothelial cells (HREs). CD140b (PDGFR  $\beta$ ) plays a crucial role in controlling the intrinsic proliferation (PMID: 30976657)

## Storage

**Storage:**  
Store at -80°C.  
**The product is shipped with ice packs. Upon receipt, store it immediately at -80°C**

**Storage Buffer:**  
PBS only, pH7.3

For technical support and original validation data for this product please contact:

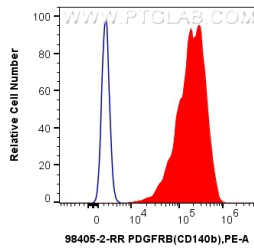
T: 4006900926

E: [Proteintech-CN@ptglab.com](mailto:Proteintech-CN@ptglab.com)

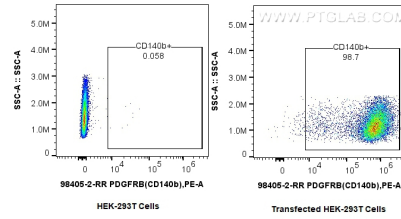
W: [ptgcn.com](http://ptgcn.com)

**This product is exclusively available under Proteintech Group brand and is not available to purchase from any other manufacturer.**

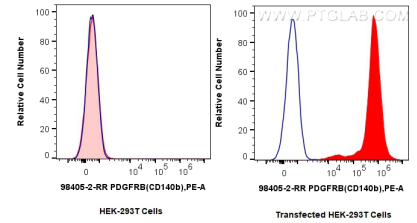
## Selected Validation Data



1x10<sup>6</sup> MG-63 cells were surface stained with 0.25 ug Anti-Human PDGFR beta/CD140b Rabbit RecAb (98405-2-RR, Clone: 242711A9) (red) or 0.25 ug Rabbit IgG Isotype Control RecAb (98136-1-RR, Clone: 240953C9) (blue), and PE-Conjugated Goat Anti-Rabbit IgG(H+L). Cells were not fixed. This data was developed using the same antibody clone with 98405-2-PBS in a different storage buffer formulation.



1x10<sup>6</sup> HEK-293T cells or PDGFR beta/CD140b transfected HEK-293T cells were surface stained with 0.25 ug Anti-Human PDGFR beta/CD140b Rabbit RecAb (98405-2-RR, Clone: 242711A9) and PE-Conjugated Goat Anti-Rabbit IgG(H+L). Cells were not fixed. This data was developed using the same antibody clone with 98405-2-PBS in a different storage buffer formulation.



1x10<sup>6</sup> HEK-293T cells (left) or PDGFR beta/CD140b transfected HEK-293T cells (right) were surface stained with 0.25 ug Anti-Human PDGFRβ Rabbit RecAb (98405-2-RR, Clone: 242711A9) (red) or 0.25 ug Rabbit IgG Isotype Control RecAb (98136-1-RR, Clone: 240953C9) (blue), and PE-Conjugated Goat Anti-Rabbit IgG(H+L). Cells were not fixed. This data was developed using the same antibody clone with 98405-2-PBS in a different storage buffer formulation.

