

For Research Use Only

Anti-Human KIR3DL1/CD158E Rabbit Recombinant Antibody, PBS Only

Catalog Number: 98389-1-PBS



Basic Information

Catalog Number:

98389-1-PBS

Concentration:

1mg, 2 mg/ml

Source:

Rabbit

Isotype:

IgG

GenBank Accession Number:

NM_013289.4

GeneID (NCBI):

3811

UNIPROT ID:

P43629-1

Full Name:

killer cell immunoglobulin-like receptor, three domains, long cytoplasmic tail, 1

Calculated MW:

49 kDa

Purification Method:

Protein A purification

CloneNo.:

243022H8

Applications

Tested Applications:

FC

Species Specificity:

human

Background Information

Killer cell immunoglobulin-like receptors (KIRs) are transmembrane glycoproteins expressed by natural killer cells and subsets of T cells. The KIR proteins are classified by the number of extracellular immunoglobulin domains (2D or 3D) and by whether they have a long (L) or short (S) cytoplasmic domain. KIR3DL1 is a receptor on natural killer (NK) cells for HLA Bw4 allele. It inhibits the activity of NK cells thus preventing cell lysis. KIR3DL1 and KIR3DS1 are highly homologous.

Storage

Storage:

Store at -80°C.

The product is shipped with ice packs. Upon receipt, store it immediately at -80°C

Storage Buffer:

PBS only

For technical support and original validation data for this product please contact:

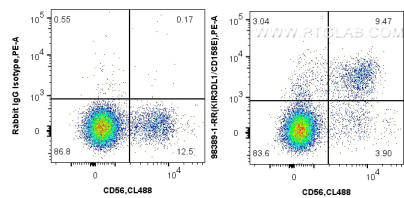
T: 4006900926

E: Proteintech-CN@ptglab.com

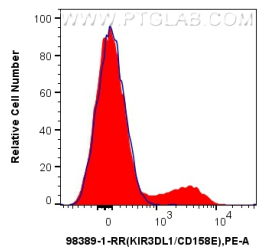
W: ptgcn.com

This product is exclusively available under Proteintech Group brand and is not available to purchase from any other manufacturer.

Selected Validation Data



1x10⁶ human PBMCs were surface stained with 0.25 ug Anti-Human KIR3DL1/CD158E Rabbit RecAb (98389-1-RR, Clone:243022H8), or Rabbit IgG Isotype Control RecAb (98136-1-RR, Clone: 240953C9) and PE-Conjugated Goat Anti-Rabbit IgG(H+L). Cells were then stained with CoraLite® Plus 488 Anti-Human NCAM1/CD56. Cells were not fixed. Lymphocyte were gated. This data was developed using the same antibody clone with 98389-1-PBS in a different storage buffer



1x10⁶ human PBMCs were surface stained with 0.25 ug Anti-Human KIR3DL1/CD158E Rabbit RecAb (98389-1-RR, Clone:243022H8)(red), or Rabbit IgG Isotype Control RecAb (98136-1-RR, Clone: 240953C9)(blue) and PE-Conjugated Goat Anti-Rabbit IgG(H+L). Cells were not fixed. Lymphocyte were gated. This data was developed using the same antibody clone with 98389-1-PBS in a different storage buffer formulation.