

For Research Use Only

Anti-Human CD96 Rabbit Recombinant Antibody

Catalog Number: 98386-3-RR



Basic Information

Catalog Number:

98386-3-RR

Concentration:

100ug, 1000 µg/ml

Source:

Rabbit

Isotype:

IgG

GenBank Accession Number:

NM_198196

GeneID (NCBI):

10225

UNIPROT ID:

P40200

Full Name:

CD96 molecule

Calculated MW:

402 aa, 46 kDa

Purification Method:

Protein A purification

CloneNo.:

242964G12

Recommended Dilutions:

FC: 0.25 ug per 10⁶ cells in 100 µl suspension

Applications

Tested Applications:

FC

Species Specificity:

human

Positive Controls:

FC : human PBMCs,

Background Information

CD96 is a member of the poliovirus receptor (PVR, CD155)-nectin family that includes T cell Ig and ITIM domain (TIGIT) and CD226. CD96 expression is broadly similar between mice and humans, and is present on a proportion of hematopoietic stem cells, αβ and γδ T-cells, NK cells and a sub-population of B-cells in humans and present on αβ and γδ T-cells, NK cells and NKT cells in mice (PMID: 32043568, 29531070)

Storage

Storage:

Store at 2 - 8°C. Stable for one year after shipment.

Storage Buffer:

PBS with 0.09% sodium azide, pH7.3

For technical support and original validation data for this product please contact:

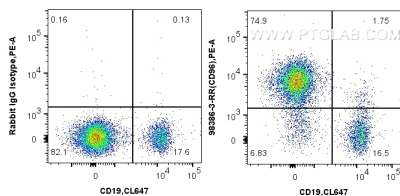
T: 4006900926

E: Proteintech-CN@ptglab.com

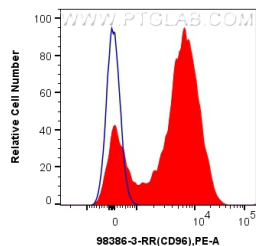
W: ptgcn.com

This product is exclusively available under Proteintech Group brand and is not available to purchase from any other manufacturer.

Selected Validation Data



1x10⁶ human PBMCs were surface stained with 0.25 ug Anti-Human CD96 Rabbit RecAb (98386-3-RR, Clone:242964G12), or Rabbit IgG Isotype Control RecAb (98136-1-RR, Clone: 240953C9) and PE-Conjugated Goat Anti-Rabbit IgG(H+L). Cells were then stained with CoraLite® Plus 647 Anti-Human CD19. Cells were not fixed. Lymphocyte were gated.



1x10⁶ human PBMCs were surface stained with 0.25 ug Anti-Human CD96 Rabbit RecAb (98386-3-RR, Clone:242964G12)(red), or Rabbit IgG Isotype Control RecAb (98136-1-RR, Clone: 240953C9) (blue) and PE-Conjugated Goat Anti-Rabbit IgG(H+L). Cells were not fixed. Lymphocyte were gated.