

For Research Use Only

# Anti-Human NCR3/NKp30 Rabbit Recombinant Antibody, PBS Only

Catalog Number: 98365-2-PBS



## Basic Information

<b>Catalog Number:</b> 98365-2-PBS	<b>GenBank Accession Number:</b> BC052582	<b>Purification Method:</b> Protein A purification
<b>Concentration:</b> 1mg, 2 mg/ml	<b>GeneID (NCBI):</b> 259197	<b>CloneNo.:</b> 243109B11
<b>Source:</b> Rabbit	<b>UNIPROT ID:</b> O14931	
<b>Isotype:</b> IgG	<b>Full Name:</b> natural cytotoxicity triggering receptor 3	
<b>Immunogen Catalog Number:</b> EG31663	<b>Calculated MW:</b> 201 aa, 22 kDa	

## Applications

**Tested Applications:**  
FC

**Species Specificity:**  
human

## Background Information

NKp30 (CD337) (NCR3) is a 30-kDa type I transmembrane protein characterized by a single V-type immunoglobulin (Ig) extracellular domain. NKp30 expression is mostly restricted to NK cells although recent studies found this NCR to be present on the surface of additional immune cells, including  $\gamma \delta$  T cells and Innate Lymphoid Cells (ILCs). NKp30 is involved in NK cell-mediated killing of various tumor cell lines, virus-infected cells and also of autologous dendritic cells (DCs) during the so-called "editing" process.

## Storage

**Storage:**  
Store at -80°C.  
**The product is shipped with ice packs. Upon receipt, store it immediately at -80°C**

**Storage Buffer:**  
PBS only, pH7.3

For technical support and original validation data for this product please contact:

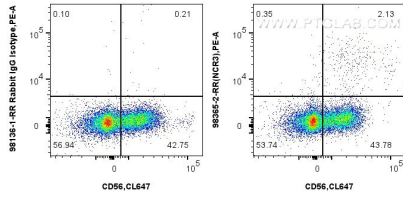
T: 4006900926

E: [Proteintech-CN@ptglab.com](mailto:Proteintech-CN@ptglab.com)

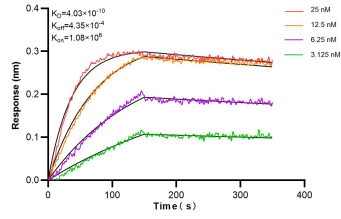
W: [ptgcn.com](http://ptgcn.com)

**This product is exclusively available under Proteintech Group brand and is not available to purchase from any other manufacturer.**

## Selected Validation Data



1x10<sup>6</sup> human peripheral blood leukocytes were surface stained with 0.25 ug Anti-Human NCR3/NKp30 Rabbit RecAb (98365-2-RR, Clone: 243109B11) or 0.25 ug Rabbit IgG Isotype Control RecAb (98136-1-RR, Clone: 240953C9), and PE-Conjugated Goat Anti-Rabbit IgG(H+L). Cells were then stained with CoraLite® Plus 647 Anti-Human NCAM1/CD56. Cells were not fixed. This data was developed using the same antibody clone with 98365-2-PBS in a different storage buffer



Biolayer interferometry (BLI) kinetic assays of 98365-2-RR against Human NCR3/NKp30 were performed. The affinity constant is 0.403 nM.