

For Research Use Only

# Anti-Mouse CLEC12A/CD371 Rabbit Recombinant Antibody, PBS Only

Catalog Number: 98357-1-PBS



## Basic Information

<b>Catalog Number:</b> 98357-1-PBS	<b>GenBank Accession Number:</b> /	<b>Purification Method:</b> Protein A purification
<b>Concentration:</b> 1mg, 2 mg/ml	<b>GeneID (NCBI):</b> 232413	<b>CloneNo.:</b> 242620B12
<b>Source:</b> Rabbit	<b>UNIPROT ID:</b> Q504P2	
<b>Isotype:</b> IgG	<b>Full Name:</b> C-type lectin domain family 12, member a	
<b>Immunogen Catalog Number:</b> EG2726	<b>Calculated MW:</b> 31 kDa	

## Applications

**Tested Applications:**  
FC

**Species Specificity:**  
mouse

## Background Information

CLEC12A, also known as CD371, M1CL, DCAL-2 or CLL-1, is a type II transmembrane glycoprotein and a member of the C-type lectin superfamily (PMID: 30401586). This protein, which contains a single C-type lectin-like domain and a cytoplasmic immunoreceptor tyrosine-based inhibitory motif (ITIM), is related to LOX-1 and Dectin-1 and is variably spliced and highly N-glycosylated (PMID: 14739280). Its ITIM sequence recruits the tyrosine phosphatases SHP-1 and SHP-2 to negatively regulate Syk signaling.

## Storage

**Storage:**  
Store at -80°C.  
**The product is shipped with ice packs. Upon receipt, store it immediately at -80°C**

**Storage Buffer:**  
PBS only, pH7.3

For technical support and original validation data for this product please contact:

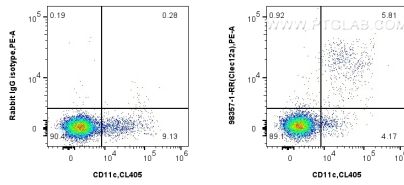
T: 4006900926

E: [Proteintech-CN@ptglab.com](mailto:Proteintech-CN@ptglab.com)

W: [ptgcn.com](http://ptgcn.com)

**This product is exclusively available under Proteintech Group brand and is not available to purchase from any other manufacturer.**

## Selected Validation Data



1x10<sup>6</sup> mouse splenocytes were surface stained with 0.25 ug Anti-Mouse CLEC12A/CD371 Rabbit RecAb (98357-1-RR, Clone: 242620B12) or 0.25 ug Rabbit IgG Isotype Control RecAb (98136-1-RR, Clone: 240953C9), and PE-Conjugated Goat Anti-Rabbit IgG(H+L). Cells were then stained with CoraLite® Plus 405 Anti-Mouse CD11c (N418) Mouse IgG2a Recombinant Antibody (CL405-65602, Clone: N418) and APC Anti-Mouse CD8a (53-6.7) (APC-65069, Clone: 53-6.7).

