

For Research Use Only

Anti-Mouse CXCR2 Rabbit Recombinant Antibody

Catalog Number: 98353-4-RR



Basic Information

Catalog Number: 98353-4-RR	GenBank Accession Number: NM_009909.3	Purification Method: Protein A purification
Concentration: 100ug, 1000 µg/ml	GeneID (NCBI): 12765	CloneNo.: 242766G3
Source: Rabbit	UNIPROT ID: P35343	
Isotype: IgG	Full Name: interleukin 8 receptor, beta	
Immunogen Catalog Number: EG2228	Calculated MW: 40 kDa	

Applications

Tested Applications:
FC

Species Specificity:
mouse

Background Information

CXCR2, also named as CD182, Cmkar2, Gpcr16, or IL8rb, belongs to the G-protein coupled receptor 1 family. CXCR2 is a receptor for interleukin-8, which is a powerful neutrophil chemotactic factor. Binding of IL-8 to the receptor causes activation of neutrophils. This response is mediated via a G-protein that activates a phosphatidylinositol-calcium second messenger system. CXCR2 binds to IL-8 with high affinity. CXCR2 also binds with high affinity to CXCL3, GRO/MGSA and NAP-2.

Storage

Storage:
Store at 2 - 8°C. Stable for one year after shipment.

Storage Buffer:
PBS with 0.09% sodium azide, pH7.3

For technical support and original validation data for this product please contact:

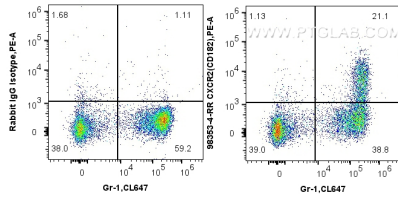
T: 4006900926

E: Proteintech-CN@ptglab.com

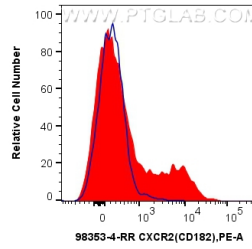
W: ptgcn.com

This product is exclusively available under Proteintech Group brand and is not available to purchase from any other manufacturer.

Selected Validation Data



1x10⁶ mouse bone marrow cells were surface stained with 0.25 ug Anti-Mouse CXCR2 Rabbit RecAb (98353-4-RR, Clone: 242766G3) or Rabbit IgG Isotype Control RecAb (98136-1-RR, Clone: 240953C9), and PE-Conjugated Goat Anti-Rabbit IgG(H+L). Cells were co-stained with CoraLite® Plus 647 Anti-Mouse Ly-6G/Ly-6C (Gr-1). Cells were not fixed.



1x10⁶ mouse bone marrow cells were surface stained with 0.25 ug Anti-Mouse CXCR2 Rabbit RecAb (98353-4-RR, Clone: 242766G3) (red) or Rabbit IgG Isotype Control RecAb (98136-1-RR, Clone: 240953C9), and PE-Conjugated Goat Anti-Rabbit IgG(H+L). Cells were not fixed.