

For Research Use Only

# Anti-Mouse SLAM/CD150 Rabbit Recombinant Antibody

Catalog Number: 98348-1-RR



## Basic Information

Catalog Number:

98348-1-RR

Concentration:

100ug, 1000 µg/ml

Source:

Rabbit

Isotype:

IgG

Immunogen Catalog Number:

EG2787

GenBank Accession Number:

NM\_013730.4

GeneID (NCBI):

27218

UNIPROT ID:

Q9QUM4-1

Full Name:

signaling lymphocytic activation  
molecule family member 1

Calculated MW:

38 kDa

Purification Method:

Protein A purification

CloneNo.:

242631G1

Recommended Dilutions:

FC: 0.25 ug per 10<sup>6</sup> cells in a 100 µl  
suspension

## Applications

Tested Applications:

FC

Species Specificity:

mouse

Positive Controls:

FC : mouse splenocytes,

## Background Information

Signaling lymphocytic activation molecule (SLAM, also known as SLAMF1 or CD150) is a 70-95 kDa transmembrane glycoprotein that belongs to the immunoglobulin gene superfamily. SLAM is constitutively expressed on peripheral blood memory T-cells, T-cell clones, immature thymocytes and a proportion of B-cells, and is rapidly induced on naive T-cells after activation. SLAM is involved in T cell stimulation and cytokine production, and may play an important role in the regulation of immune responses to pathogens.

## Storage

Storage:

Store at 2 - 8°C. Stable for one year after shipment.

Storage Buffer:

PBS with 0.09% sodium azide, pH7.3

For technical support and original validation data for this product please contact:

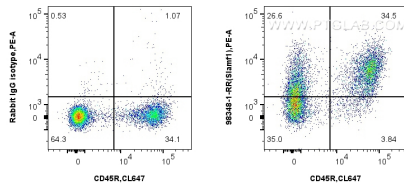
T: 4006900926

E: [Proteintech-CN@ptglab.com](mailto:Proteintech-CN@ptglab.com)

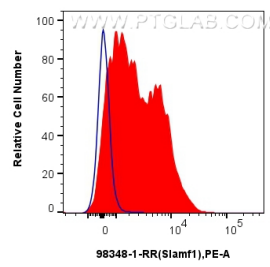
W: [ptgcn.com](http://ptgcn.com)

This product is exclusively available under Proteintech Group brand and is not available to purchase from any other manufacturer.

## Selected Validation Data



1x10<sup>6</sup> mouse splenocytes were surface stained with 0.25 ug Anti-Mouse Slamf1 Rabbit RecAb (98348-1-RR, Clone: 242631G1) or 0.25 ug Rabbit IgG Isotype Control RecAb (98136-1-RR, Clone: 240953C9), and PE-Conjugated Goat Anti-Rabbit IgG(H+L). Cells were then stained with CoraLite® Plus 647 Anti-Mouse CD45R (B220) (RA3-6B2) (CL647-65139, Clone: RA3-6B2). Cells were not fixed.



1x10<sup>6</sup> mouse splenocytes were surface stained with 0.25 ug Anti-Mouse Slamf1 Rabbit RecAb (98348-1-RR, Clone: 242631G1) (red) or 0.25 ug Rabbit IgG Isotype Control RecAb (98136-1-RR, Clone: 240953C9) (blue), and PE-Conjugated Goat Anti-Rabbit IgG(H+L). Cells were not fixed.