

For Research Use Only

# Anti-Human CD100 Rabbit Recombinant Antibody, PBS Only

Catalog Number: 98345-2-PBS



## Basic Information

Catalog Number:

98345-2-PBS

Concentration:

1mg, 2000  $\mu$ g/ml

Source:

Rabbit

Isotype:

IgG

GenBank Accession Number:

BC054500

GeneID (NCBI):

10507

UNIPROT ID:

Q92854

Full Name:

sema domain, immunoglobulin domain (Ig), transmembrane domain (TM) and short cytoplasmic domain, (semaphorin) 4D

Calculated MW:

96 kDa

Purification Method:

Protein A purification

CloneNo.:

242691F8

## Applications

Tested Applications:

FC

Species Specificity:

human

## Background Information

CD100 (also known as SEMA4D), a 150 kDa homodimer, belongs to the family of immune semaphorins, and CD100 is abundantly expressed on resting T cells, NK cells, and antigen-presenting cells. As a transmembrane glycoprotein, it is digested to its soluble form, sCD100, by specific matrix metalloproteinases. CD100 has been reported that the expression levels of CD100, and one of its receptors, plexin-B1 (PLXNB1), are increased in head and neck, prostate, colon, breast, and lung cancers, and the interaction between them provides oncogenic signaling essential for tumor growth and metastasis.

## Storage

Storage:

Store at -80°C.

The product is shipped with ice packs. Upon receipt, store it immediately at -80°C

Storage Buffer:

PBS only

For technical support and original validation data for this product please contact:

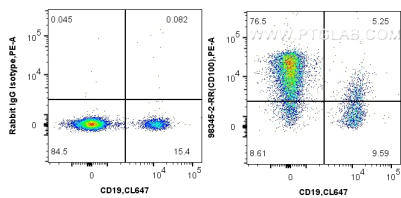
T: 4006900926

E: Proteintech-CN@ptglab.com

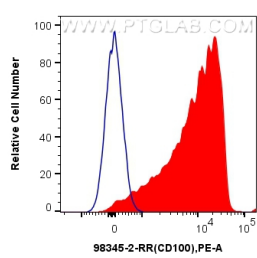
W: ptgcn.com

This product is exclusively available under Proteintech Group brand and is not available to purchase from any other manufacturer.

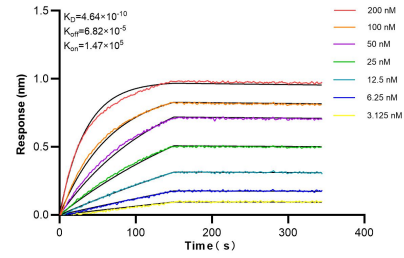
Selected Validation Data



1x10<sup>6</sup> human PBMCs were surface stained with 0.25 ug Anti-Human CD100 Rabbit RecAb (98345-2-RR, Clone:242691F8) or Rabbit IgG Isotype Control Recombinant Antibody (98136-1-RR, Clone: 240953C9), and PE-Conjugated Goat Anti-Rabbit IgG(H+L). Cells were then stained with CoraLite® Plus 647 Anti-Human CD19. Cells were not fixed. Lymphocytes were gated. This data was developed using the same antibody clone with 98345-2-PBS in a different storage buffer



1x10<sup>6</sup> human PBMCs were surface stained with 0.25 ug Anti-Human CD100 Rabbit RecAb (98345-2-RR, Clone: 242691F8) (red) or Rabbit IgG Isotype Control Recombinant Antibody (98136-1-RR, Clone: 240953C9) (blue), and PE-Conjugated Goat Anti-Rabbit IgG(H+L). Cells were not fixed. Lymphocytes were gated. This data was developed using the same antibody clone with 98345-2-PBS in a different storage buffer formulation.



Biolayer interferometry (BLI) kinetic assays of 98345-2-RR against Human CD100 were performed. The affinity constant is 0.464 nM.