

For Research Use Only

Anti-Human EGFR Rabbit Recombinant Antibody

Catalog Number: 98344-1-RR



Basic Information

Catalog Number: 98344-1-RR	GenBank Accession Number: NM_005228.5	Purification Method: Protein A purification
Concentration: 100ug, 1000 ug/ml	GeneID (NCBI): 1956	CloneNo.: 242684A1
Source: Rabbit	UNIPROT ID: P00533	
Isotype: IgG	Full Name: epidermal growth factor receptor (erythroblastic leukemia viral (v-erb- b) oncogene homolog, avian)	
	Calculated MW: 134kd	

Applications

Tested Applications:
FC

Species Specificity:
human

Background Information

EGFR, also named as ERBB1, is a cell-surface receptor for members of the epidermal growth factor family (EGF-family) of extracellular protein ligands. Binding of the protein to a ligand induces receptor dimerization and tyrosine autophosphorylation and leads to cell proliferation. The gene resides on chromosome 7p12, encoding a 170 kDa membrane-associated glycoprotein. Recent studies have shown EGFR plays a critical role in cancer development and progression, including cell proliferation, apoptosis, angiogenesis, and metastatic spread. Mutations in this gene are associated with lung cancer.

Storage

Storage:
Store at 2 - 8°C. Stable for one year after shipment.

Storage Buffer:
PBS with 0.09% sodium azide

For technical support and original validation data for this product please contact:

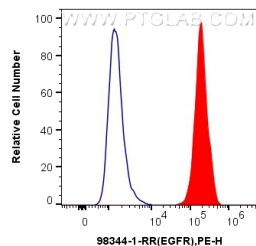
T: 4006900926

E: Proteintech-CN@ptglab.com

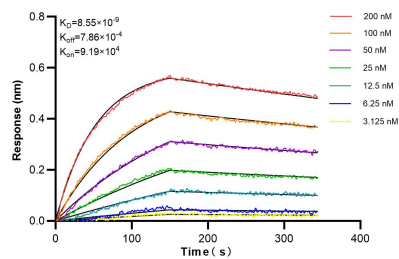
W: ptgcn.com

This product is exclusively available under Proteintech Group brand and is not available to purchase from any other manufacturer.

Selected Validation Data



1×10^6 A431 cells were surface stained with 0.25 μ g Anti-Human EGFR Rabbit RecAb (98344-1-RR, Clone: 242684A1) (red) or 0.25 μ g Rabbit IgG Isotype Control RecAb (98136-1-RR, Clone: 240953C9) (blue), and PE-Conjugated Goat Anti-Rabbit IgG(H+L). Cells were not fixed.



Biolayer interferometry (BLI) kinetic assays of 98344-1-RR against Human EGFR were performed. The affinity constant is 8.55 nM.