

For Research Use Only

Anti-Human IFNGR1/CD119 Rabbit Recombinant Antibody

Catalog Number: 98343-1-RR



Basic Information

Catalog Number:

98343-1-RR

Concentration:

100ug, 1000 μ g/ml

Source:

Rabbit

Isotype:

IgG

GenBank Accession Number:

NM_000416.3

GeneID (NCBI):

3459

UNIPROT ID:

P15260-1

Full Name:

interferon gamma receptor 1

Calculated MW:

54 kDa

Purification Method:

Protein A purification

CloneNo.:

242632A8

Applications

Tested Applications:

FC

Species Specificity:

human

Background Information

Interferon-gamma (IFN- γ) is a cytokine critical for innate and adaptive immunity against viral and intracellular bacterial infections and for tumor control. Cellular responses to IFN- γ are activated through its interaction with a heterodimeric receptor consisting of two subunits, IFNGR1 (CD119) and IFNGR2. IFNGR1 is the ligand-binding subunit which binds IFN- γ with high affinity, whereas IFNGR2 serves as the accessory subunit. Two subunits bind one IFN- γ dimer. Defects in IFNGR1 are a cause of mendelian susceptibility to mycobacterial disease (MSMD), also known as familial disseminated atypical mycobacterial infection. (PMID: 17981204; 946248; 10888113)

Storage

Storage:

Store at 2 - 8°C. Stable for one year after shipment.

Storage Buffer:

PBS with 0.09% sodium azide, pH 7.3.

For technical support and original validation data for this product please contact:

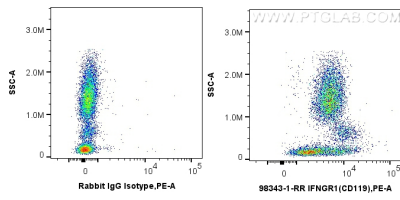
T: 4006900926

E: Proteintech-CN@ptglab.com

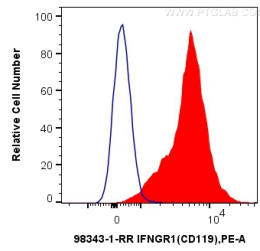
W: ptgcn.com

This product is exclusively available under Proteintech Group brand and is not available to purchase from any other manufacturer.

Selected Validation Data



1x10⁶ human peripheral blood leukocytes were surface stained with 0.25 ug Anti-Human IFNGR1/CD119 Rabbit RecAb (98343-1-RR, Clone: 242632A8) or Rabbit IgG Isotype Control RecAb (98136-1-RR, Clone: 240953C9) and PE-Conjugated Goat Anti-Rabbit IgG(H+L). Cells were incubated with FC Receptor Block prior to staining. Cells were not fixed.



1x10⁶ human peripheral blood leukocytes were surface stained with 0.25 ug Anti-Human IFNGR1/CD119 Rabbit RecAb (98343-1-RR, Clone: 242632A8) (red) or 0.25 ug Rabbit IgG Isotype Control RecAb (98136-1-RR, Clone: 240953C9) (blue) and PE-Conjugated Goat Anti-Rabbit IgG(H+L). Cells were incubated with FC Receptor Block prior to staining. Cells were not fixed.