

For Research Use Only

Anti-Human KIR2DS4/CD158i Rabbit Recombinant Antibody

Catalog Number: 98339-3-RR



Basic Information

Catalog Number:

98339-3-RR

Concentration:

100ug, 1000 µg/ml

Source:

Rabbit

Isotype:

IgG

Immunogen Catalog Number:

EG4353

GenBank Accession Number:

NM_012314.6

GeneID (NCBI):

3809

UNIPROT ID:

P43632

Full Name:

killer cell immunoglobulin-like receptor, two domains, short cytoplasmic tail, 4

Calculated MW:

34 kDa

Purification Method:

Protein A purification

CloneNo.:

242656E10

Recommended Dilutions:

FC: 0.25 ug per 10⁶ cells in a 100 µl suspension

Applications

Tested Applications:

FC

Species Specificity:

human

Positive Controls:

FC : human peripheral blood leukocyte,

Background Information

KIR2DS4 (also known as CD158i) is a member of the killer cell immunoglobulin-like receptor (KIR) family. KIRs are transmembrane glycoproteins expressed by natural killer cells and subsets of T cells. KIRs are mainly involved in inhibiting NK killing (inhibitory KIRs) via interaction with MHC class I molecules. KIR2DS4 has been reported to be an activating KIR and recognize the HLA-Cw4 protein.

Storage

Storage:

Store at 2 - 8°C. Stable for one year after shipment.

Storage Buffer:

PBS with 0.09% sodium azide, pH7.3

For technical support and original validation data for this product please contact:

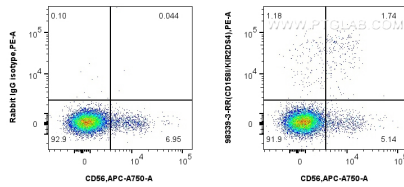
T: 4006900926

E: Proteintech-CN@ptglab.com

W: ptgcn.com

This product is exclusively available under Proteintech Group brand and is not available to purchase from any other manufacturer.

Selected Validation Data



1x10⁶ human peripheral blood leukocyte were surface stained with 0.25 ug Anti-Human KIR2DS4/CD158i Rabbit RecAb (98339-3-RR, Clone: 242656E10) or 0.25 ug Rabbit IgG Isotype Control RecAb (98136-1-RR, Clone: 240953C9), and PE-Conjugated Goat Anti-Rabbit IgG(H+L). Cells were then stained with CoraLite® Plus 750 Anti-Human NCAM1/CD56 Rabbit Recombinant Antibody (CL750-98033, Clone: 240078A7). Cells were not fixed.