

For Research Use Only

# Anti-Human CEACAM6/CD66c Rabbit Recombinant Antibody

Catalog Number: 98329-3-RR



## Basic Information

Catalog Number:

98329-3-RR

Concentration:

100ug, 1000  $\mu$ g/ml

Source:

Rabbit

Isotype:

IgG

GenBank Accession Number:

BC005008

GeneID (NCBI):

4680

UNIPROT ID:

P40199

Full Name:

carcinoembryonic antigen-related  
cell adhesion molecule 6 (non-  
specific cross reacting antigen)

Calculated MW:

37 kDa

Purification Method:

Protein A purification

CloneNo.:

241997G1

Recommended Dilutions:

FC: 0.25 ug per  $10^6$  cells in 100  $\mu$ l  
suspension

## Applications

Tested Applications:

FC

Species Specificity:

human

Positive Controls:

FC : human peripheral blood leukocytes,

## Background Information

Carcinoembryonic antigen-related cell adhesion molecules (CEACAMs) belong to the immunoglobulin superfamily of cell adhesion molecules. CEACAMs play major roles in cell-cell and cell-ECM adhesion and have been implicated in controlling cell proliferation, angiogenesis, and tissue remodeling (PMID: 23021083). CEACAM6, also known as CD66c, is a glycosylphosphatidylinositol (GPI)-linked cell surface protein that belongs to the CEACAM family of the immunoglobulin superfamily (PMID: 23903773). It is normally expressed on the surface of myeloid and epithelial surfaces and upregulated preferentially at the apical/luminal membranes of many tumors (PMID: 27595061; 35082925). CEACAM6 plays an important role in cell adhesion, proliferation, tumorigenesis, metastasis, and immunity (PMID: 31797958).

## Storage

Storage:

Store at 2 - 8°C. Stable for one year after shipment.

Storage Buffer:

PBS with 0.09% sodium azide, pH7.3

For technical support and original validation data for this product please contact:

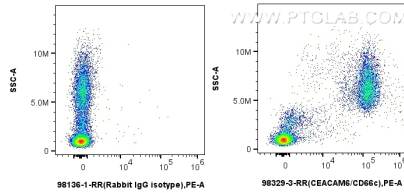
T: 4006900926

E: [Proteintech-CN@ptglab.com](mailto:Proteintech-CN@ptglab.com)

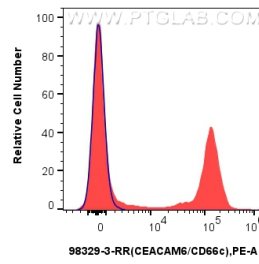
W: [ptgcn.com](http://ptgcn.com)

This product is exclusively available under Proteintech Group brand and is not available to purchase from any other manufacturer.

## Selected Validation Data



1x10<sup>6</sup> human peripheral blood leukocytes were surface stained with 0.25 ug Anti-Human CEACAM6/CD66c Rabbit RecAb (98329-3-RR, Clone: 241997G1) or Rabbit IgG Isotype Control RecAb (98136-1-RR, Clone: 240953C9), and PE-conjugated Goat Anti-Rabbit IgG. Cells were incubated with FC Receptor Block prior to staining. Cells were not fixed.



1x10<sup>6</sup> human peripheral blood leukocytes were surface stained with 0.25 ug Anti-Human CEACAM6/CD66c Rabbit RecAb (98329-3-RR, Clone:241997G1) (red) or Rabbit IgG Isotype Control RecAb (98136-1-RR, Clone: 240953C9) (blue), and PE-conjugated Goat Anti-Rabbit IgG. Cells were incubated with FC Receptor Block prior to staining. Cells were not fixed.