

For Research Use Only

Anti-Human JAM-A/CD321 Rabbit Recombinant Antibody, PBS Only

Catalog Number: 98328-3-PBS



Basic Information

Catalog Number: 98328-3-PBS	GenBank Accession Number: NM_016946.6	Purification Method: Protein A purification
Concentration: 1mg, 2 mg/ml	GeneID (NCBI): 50848	CloneNo.: 242290B3
Source: Rabbit	UNIPROT ID: Q9Y624-1	
Isotype: IgG	Full Name: F11 receptor	
Immunogen Catalog Number: EG1372	Calculated MW: 33kDa	

Applications

Tested Applications:
FC

Species Specificity:
human

Background Information

Junctional adhesion molecule A (JAM-A), also known as CD321 or F11 receptor (F11R), was first identified in human platelets as a 32/35 kDa protein duplex that serves as the receptor for a functional antibody that activates platelets. It seems to play a role in epithelial tight junction formation. It was also reported to function as a receptor for reovirus and a ligand for the integrin LFA1.

Storage

Storage:
Store at -80°C.
The product is shipped with ice packs. Upon receipt, store it immediately at -80°C
Storage Buffer:
PBS only, pH7.3

For technical support and original validation data for this product please contact:

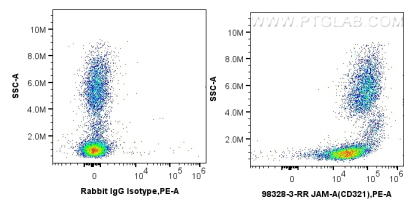
T: 4006900926

E: Proteintech-CN@ptglab.com

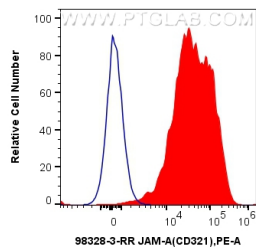
W: ptgcn.com

This product is exclusively available under Proteintech Group brand and is not available to purchase from any other manufacturer.

Selected Validation Data



1x10⁶ human peripheral blood leukocytes were surface stained with 0.25 ug Anti-Human JAM-A/CD321 Rabbit RecAb (98328-3-RR, Clone: 242290B3) or Rabbit IgG Isotype Control RecAb (98136-1-RR, Clone: 240953C9), and PE-Conjugated Goat Anti-Rabbit IgG(H+L). Cells were incubated with FC Receptor Block prior to staining. Cells were not fixed. This data was developed using the same antibody clone with 98328-3-PBS in a different storage buffer formulation.



1x10⁶ human peripheral blood leukocytes were surface stained with 0.25 ug Anti-Human JAM-A/CD321 Rabbit RecAb (98328-3-RR, Clone:242290B3) (red) or 0.25 ug Rabbit IgG Isotype Control RecAb (98136-1-RR, Clone: 240953C9) (blue), and PE-Conjugated Goat Anti-Rabbit IgG(H+L). Cells were incubated with FC Receptor Block prior to staining. Cells were not fixed. This data was developed using the same antibody clone with 98328-3-PBS in a different storage buffer formulation.