

For Research Use Only

# Anti-Human LAIR1 Rabbit Recombinant Antibody

Catalog Number: 98326-1-RR



## Basic Information

<b>Catalog Number:</b> 98326-1-RR	<b>GenBank Accession Number:</b> BC027899	<b>Purification Method:</b> Protein A purification
<b>Concentration:</b> 100ug, 1000 ug/ml	<b>GeneID (NCBI):</b> 3903	<b>CloneNo.:</b> 241805G2
<b>Source:</b> Rabbit	<b>UNIPROT ID:</b> Q6GTX8	
<b>Isotype:</b> IgG	<b>Full Name:</b> leukocyte-associated immunoglobulin-like receptor 1	
	<b>Calculated MW:</b> 287 aa, 31 kDa	

## Applications

**Tested Applications:**  
FC

**Species Specificity:**  
human

## Background Information

Leukocyte-associated immunoglobulin-like receptor 1 (LAIR1) is a transmembrane glycoprotein with a single immunoglobulin-like domain and a cytoplasmic tail containing two immune receptor tyrosine-based inhibitory motifs (PMID: 9285412). LAIR1 is expressed on the majority of human PBMCs, including NK, T, B, monocytes, and dendritic cells, as well as the majority of thymocytes (PMID: 10229813). It functions as an inhibitory receptor that plays a constitutive negative regulatory role on cytolytic function of NK cells, B cells and T cells. LAIR1 is a collagen receptor (PMID: 16754721). Tumor-expressed collagens can modulate immune cell function through the inhibitory collagen receptor LAIR1 (PMID: 21955987).

## Storage

**Storage:**  
Store at 2 - 8°C. Stable for one year after shipment.

**Storage Buffer:**  
PBS with 0.09% sodium azide, pH 7.3.

For technical support and original validation data for this product please contact:

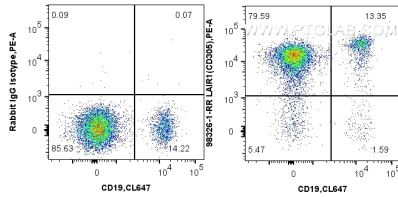
T: 4006900926

E: [Proteintech-CN@ptglab.com](mailto:Proteintech-CN@ptglab.com)

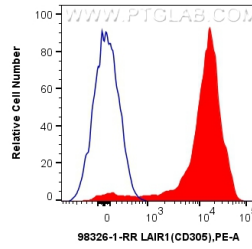
W: [ptgcn.com](http://ptgcn.com)

This product is exclusively available under Proteintech Group brand and is not available to purchase from any other manufacturer.

## Selected Validation Data



1x10<sup>6</sup> human PBMCs were surface stained with 0.13 ug Anti-Human LAIR1 Rabbit RecAb (98326-1-RR, Clone:241805G2) or Rabbit IgG Isotype Control RecAb (98136-1-RR, Clone: 240953C9) and PE-Conjugated Goat Anti-Rabbit IgG(H+L). Cells were then stained with CoraLite® Plus 647 Anti-Human CD19. Cells were incubated with FC Receptor Block prior to staining. Cells were not fixed.



1x10<sup>6</sup> human PBMCs were surface stained with 0.13 ug Anti-Human LAIR1 Rabbit RecAb (98326-1-RR, Clone:241805G2) (red) or Rabbit IgG Isotype Control RecAb (98136-1-RR, Clone: 240953C9) (blue), and PE-Conjugated Goat Anti-Rabbit IgG(H+L). Cells were incubated with FC Receptor Block prior to staining. Cells were not fixed.