

For Research Use Only

Anti-Human SEMA7A Rabbit Recombinant Antibody, PBS Only

Catalog Number: 98324-3-PBS



Basic Information

Catalog Number:

98324-3-PBS

Concentration:

1mg, 2 mg/ml

Source:

Rabbit

Isotype:

IgG

Immunogen Catalog Number:

EG2005

GenBank Accession Number:

NM_003612.5

GeneID (NCBI):

8482

UNIPROT ID:

O75326-1

Full Name:

semaphorin 7A, GPI membrane
anchor (John Milton Hagen blood
group)

Calculated MW:

75kDa

Purification Method:

Protein A purification

CloneNo.:

241814B12

Applications

Tested Applications:

FC

Species Specificity:

human

Background Information

SEMA7A, also named CD108 and SEMAL, belongs to the semaphorin family. SEMA7A is the only membrane-associated glycosylphosphatidylinositol (GPI)-linked semaphorin and plays a role in the regulation of neuronal axon outgrowth. In addition to its role in guiding axon pathfinding during neuronal development, SEMA7A has diverse functions in morphogenesis and immune cell control and regulates T cell responses via the $\alpha 1 \beta 1$ integrin receptor.

Storage

Storage:

Store at -80°C.

The product is shipped with ice packs. Upon receipt, store it immediately at -80°C

Storage Buffer:

PBS only, pH7.3

For technical support and original validation data for this product please contact:

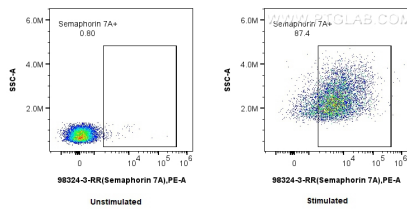
T: 4006900926

E: Proteintech-CN@ptglab.com

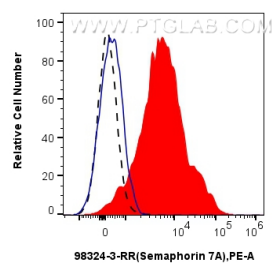
W: ptgcn.com

This product is exclusively available under Proteintech Group brand and is not available to purchase from any other manufacturer.

Selected Validation Data



1x10⁶ untreated or PHA-treated human PBMCs were surface stained with 0.25 ug Anti-Human SEMA7A Rabbit RecAb (98324-3-RR, Clone: 241814B12) or 0.25 ug Rabbit IgG Isotype Control RecAb (98136-1-RR, Clone: 240953C9), and PE-Conjugated Goat Anti-Rabbit IgG(H+L). Cells were not fixed. This data was developed using the same antibody clone with 98324-3-PBS in a different storage buffer formulation.



1x10⁶ PHA-treated human PBMCs were surface stained with 0.25 ug Anti-Human SEMA7A Rabbit RecAb (98324-3-RR, Clone: 241814B12) (red) or 0.25 ug Rabbit IgG Isotype Control RecAb (98136-1-RR, Clone: 240953C9) (blue), and PE-Conjugated Goat Anti-Rabbit IgG(H+L). 1x10⁶ untreated human PBMCs were surface stained with 0.25 ug Anti-Human SEMA7A Rabbit RecAb (98324-3-RR, Clone: 241814B12) and PE-Conjugated Goat Anti-Rabbit IgG(H+L) (black, dashed). Cells were