

For Research Use Only

# Anti-Human IL-10RB Rabbit Recombinant Antibody, PBS Only

Catalog Number: 98292-1-PBS



## Basic Information

Catalog Number:

98292-1-PBS

Size:

1mg, 2 mg/ml

Source:

Rabbit

Isotype:

IgG

GenBank Accession Number:

BC001903

GeneID (NCBI):

3588

UNIPROT ID:

Q08334

Full Name:

interleukin 10 receptor, beta

Calculated MW:

37 kDa

Purification Method:

Protein A purification

CloneNo.:

242302D2

## Applications

Tested Applications:

FC

Species Specificity:

human

## Background Information

Interleukin-10 (IL-10) is an anti-inflammatory cytokine that plays a critical role in maintaining immune system balance. IL-10 signals through a receptor complex consisting of two molecules of the IL-10R alpha-chain (IL-10RA) and two molecules of the accessory IL-10R beta-chain (IL-10RB) (PMID: 22236434). IL-10RA and IL-10RB are members of the type II cytokine receptor family. IL-10RB, also known as IL-10R2 or CDw210b, is the signaling subunit of the IL-10R complex and is constitutively expressed in a variety of cell types (PMID: 24507158). Binding of IL-10 to the IL-10R complex leads to JAK1- and TYK2-mediated phosphorylation of STAT3 (PMID: 11244051; 10433356). IL-10RB is also shared by several other cytokines, including IL22, IL-26, IFN- $\gamma$ , IL-28A/B and IL29 (PMID: 22236434).

## Storage

Storage:

Store at -80°C.

**The product is shipped with ice packs. Upon receipt, store it immediately at -80°C**

Storage Buffer:

PBS Only

For technical support and original validation data for this product please contact:

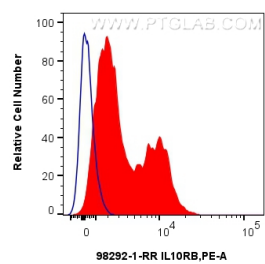
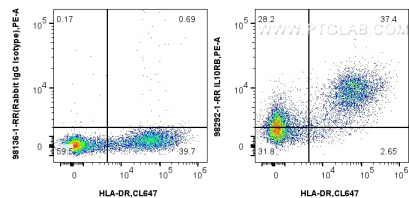
T: 4006900926

E: [Proteintech-CN@ptglab.com](mailto:Proteintech-CN@ptglab.com)

W: [ptgcn.com](http://ptgcn.com)

**This product is exclusively available under Proteintech Group brand and is not available to purchase from any other manufacturer.**

Selected Validation Data



1x10<sup>6</sup> human PBMCs were surface stained with 0.25 ug Anti-Human IL-10RB Rabbit RecAb (98292-1-RR, Clone: 242302D2) or Rabbit IgG Isotype Control RecAb (98136-1-RR, Clone: 240953C9), and PE-Conjugated Goat Anti-Rabbit IgG(H+L). Cells were co-stained with CoraLite® Plus 647 Anti-Human HLA-DR (L243) Mouse IgG2a Recombinant Antibody (CL647-65560, Clone: L243). Cells were not fixed. This data was developed using the same antibody clone with 98292-1-PBS in a

1x10<sup>6</sup> human PBMCs were surface stained with 0.25 ug Anti-Human IL-10RB Rabbit RecAb (98292-1-RR, Clone:242302D2) (red) or Rabbit IgG Isotype Control RecAb (98136-1-RR, Clone: 240953C9) (blue), and PE-Conjugated Goat Anti-Rabbit IgG(H+L). Cells were not fixed. This data was developed using the same antibody clone with 98292-1-PBS in a different storage buffer formulation.