

For Research Use Only

# Anti-Mouse CD25/IL-2RA Rabbit Recombinant Antibody

Catalog Number: 98288-1-RR



## Basic Information

Catalog Number:

98288-1-RR

Concentration:

100ug, 1000 ug/ml

Source:

Rabbit

Isotype:

IgG

Immunogen Catalog Number:

EG3087

GenBank Accession Number:

NM\_008367.3

GeneID (NCBI):

16184

UNIPROT ID:

P01590

Full Name:

interleukin 2 receptor, alpha chain

Calculated MW:

31 kDa

Purification Method:

Protein A purification

CloneNo.:

242494H5

Recommended Dilutions:

FC: 0.25 ug per 10<sup>6</sup> cells in 100  $\mu$ l suspension

## Applications

Tested Applications:

FC

Species Specificity:

mouse

Positive Controls:

FC : Anti-CD3/CD28 treated mouse splenocytes,

## Background Information

Proliferation of T lymphocytes is triggered by the interaction of IL-2 with its specific receptor following T lymphocyte activation. The receptor for IL-2 has three forms, generated by different combinations of three different proteins, the alpha chain (IL-2R alpha), the beta chain (IL-2R beta), and the gamma chain (IL-2R gamma) (PMID: 8476561). IL-2R alpha (also known as CD25) is a type I transmembrane protein present on activated T cells, activated B cells, some thymocytes, myeloid precursors, and oligodendrocytes. CD25 is also found on natural CD4<sup>+</sup>Foxp3<sup>+</sup> Treg cells and a subset of human CD4<sup>+</sup> memory T cells (PMID: 22585674).

## Storage

Storage:

Store at 2 - 8°C. Stable for one year after shipment.

Storage Buffer:

PBS with 0.09% sodium azide, pH7.3

For technical support and original validation data for this product please contact:

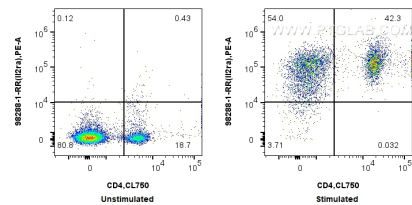
T: 4006900926

E: Proteintech-CN@ptglab.com

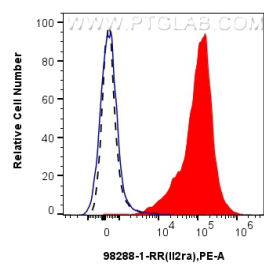
W: ptgcn.com

This product is exclusively available under Proteintech Group brand and is not available to purchase from any other manufacturer.

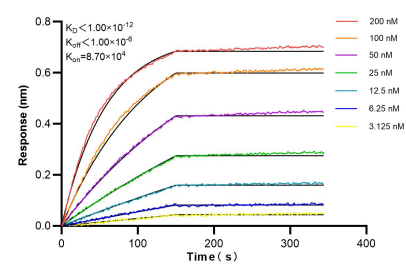
Selected Validation Data



1x10<sup>6</sup> untreated or anti-CD3/CD28 treated mouse splenocytes were surface stained with 0.25 ug Anti-Mouse CD25/IL-2RA Rabbit RecAb (98288-1-RR, Clone: 242494H5) and PE-Conjugated Goat Anti-Rabbit IgG(H+L). Cells were co-stained with CoraLite® Plus 750 Anti-Mouse CD4 (GK1.5) (CL750-65104, Clone: GK1.5). Cells were not fixed.



1x10<sup>6</sup> anti-CD3/CD28 treated mouse splenocytes were surface stained with 0.25 ug Anti-Mouse CD25/IL-2RA Rabbit RecAb (98288-1-RR, Clone: 242494H5) (red) or 0.25 ug Rabbit IgG Isotype Control RecAb (98136-1-RR, Clone: 240953C9) (blue), and PE-Conjugated Goat Anti-Rabbit IgG(H+L). 1x10<sup>6</sup> untreated mouse splenocytes were surface stained with 0.25 ug Anti-Mouse CD25/IL-2RA Rabbit RecAb (98288-1-RR, Clone: 242494H5) (black, dashed) and PE-



Bi-layer interferometry (BLI) kinetic assays of 98288-1-RR against Mouse CD25/IL-2RA were performed. The affinity constant is below 1 pM.